

聴音問題集

第4版

《2. 単旋律》

安川 徹



Sound Detection Exercise Collection

Version 4

« II. Melody »

YASKAWA Toru

◆使用方法例

1. 調、拍子、小節数を知らせて、ノートの用意をさせる
2. 最初の主和音を弾いた後、1小節分のカウントをしてから、全体を通奏
3. 弾き終わって20秒待って、前半4小節を弾く（主和音、カウントなし）
4. 3.を3回繰り返す
5. 弾き終わって20秒待って、全体を通奏
6. 弾き終わって20秒待って、後半4小節を弾く
7. 6.を3回繰り返す
8. 弾き終わって20秒待って、全体を通奏
9. 1分待って、答え合わせ
10. 全体を通奏する（可能ならば歌わせる）

聽音問題集

《單旋律》

安川 徹

1



2



3



4



5

Exercise 5 consists of two staves of music in treble clef. The key signature has one sharp (F#) and the time signature is 6/8. The first staff contains four measures of music, and the second staff contains four measures. The music features a mix of eighth and sixteenth notes, with some rests and accidentals.

6

Exercise 6 consists of two staves of music. The top staff is in treble clef and the bottom staff is in bass clef. The key signature has one sharp (F#) and the time signature is 3/8. The first staff contains four measures, and the second staff contains four measures. The music is characterized by eighth notes and rests.

7

Exercise 7 consists of two staves of music. The top staff is in treble clef and the bottom staff is in bass clef. The key signature has one sharp (F#) and the time signature is 3/8. The first staff contains four measures, and the second staff contains four measures. The music features eighth notes and rests.

8

Exercise 8 consists of two staves of music in treble clef. The key signature has one sharp (F#) and the time signature is 3/4. The first staff contains four measures, and the second staff contains four measures. The music includes eighth notes, quarter notes, and a triplet of eighth notes in the final measure of the first staff.

9

Exercise 9 consists of two staves of music in 4/4 time with a key signature of one sharp (F#). The first staff contains four measures: a quarter note on C4, an eighth note on D4, a quarter note on E4 with a sharp sign, and a quarter note on F#4. The second measure has a quarter note on G4, a quarter note on A4 with a sharp sign, and a triplet of eighth notes on B4, C5, and D5. The third measure has a quarter note on E5, a quarter note on F#5, a quarter note on G5, and a quarter note on A5. The fourth measure has a quarter note on B5, a quarter note on C6, and a quarter note on D6 with a sharp sign. The second staff contains four measures: a quarter note on E4, a quarter note on F#4, a quarter note on G4, and a quarter note on A4. The second measure has a quarter note on B4, a quarter note on C5, and a quarter note on D5 with a sharp sign. The third measure has a quarter note on E5, a quarter note on F#5, a quarter note on G5, and a quarter note on A5. The fourth measure has a quarter note on B5, a quarter note on C6, and a quarter note on D6 with a sharp sign.

10

Exercise 10 consists of two staves of music in 3/4 time with a key signature of one sharp (F#). The first staff contains four measures: a quarter note on C4, an eighth note on D4, an eighth note on E4, and a quarter note on F#4. The second measure has a quarter note on G4, a quarter note on A4 with a sharp sign, and a quarter note on B4. The third measure has a quarter note on C5, a quarter note on D5, a quarter note on E5, and a quarter note on F#5. The fourth measure has a quarter note on G5, a quarter note on A5, and a quarter note on B5. The second staff contains four measures: a quarter note on C4, a quarter note on D4, a quarter note on E4, and a quarter note on F#4. The second measure has a quarter note on G4, a quarter note on A4 with a sharp sign, a quarter note on B4, and a quarter note on C5. The third measure has a quarter note on D5, a quarter note on E5, a quarter note on F#5, and a quarter note on G5. The fourth measure has a quarter note on A5, a quarter note on B5, and a quarter note on C6.

11

Exercise 11 consists of two staves of music in 4/4 time with a key signature of one sharp (F#). The first staff contains four measures: a quarter note on C4, a quarter note on D4, a quarter note on E4, and a quarter note on F#4. The second measure has a quarter note on G4, a quarter note on A4 with a sharp sign, a quarter note on B4, and a quarter note on C5. The third measure has a quarter note on D5, a quarter note on E5, a quarter note on F#5, and a quarter note on G5. The fourth measure has a quarter note on A5, a quarter note on B5, and a quarter note on C6. The second staff contains four measures: a quarter note on C4, a quarter note on D4, a quarter note on E4, and a quarter note on F#4. The second measure has a quarter note on G4, a quarter note on A4 with a sharp sign, a quarter note on B4, and a quarter note on C5. The third measure has a quarter note on D5, a quarter note on E5, a quarter note on F#5, and a quarter note on G5. The fourth measure has a quarter note on A5, a quarter note on B5, and a quarter note on C6.

12

Exercise 12 consists of two staves of music in 6/8 time with a key signature of two flats (Bb, Eb). The first staff contains four measures: a quarter note on C4, an eighth note on D4, an eighth note on E4, a quarter note on F#4, a quarter note on G4, and a quarter note on A4. The second measure has a quarter note on B4, a quarter note on C5, a quarter note on D5, a quarter note on E5, a quarter note on F#5, and a quarter note on G5. The third measure has a quarter note on A5, a quarter note on B5, a quarter note on C6, a quarter note on D6, a quarter note on E6, and a quarter note on F#6. The fourth measure has a quarter note on G6, a quarter note on A6, and a quarter note on B6. The second staff contains four measures: a quarter note on C4, an eighth note on D4, an eighth note on E4, a quarter note on F#4, a quarter note on G4, and a quarter note on A4. The second measure has a quarter note on B4, a quarter note on C5, a quarter note on D5, a quarter note on E5, a quarter note on F#5, and a quarter note on G5. The third measure has a quarter note on A5, a quarter note on B5, a quarter note on C6, a quarter note on D6, a quarter note on E6, and a quarter note on F#6. The fourth measure has a quarter note on G6, a quarter note on A6, and a quarter note on B6.

13

Exercise 13 consists of two staves of music in 6/8 time. The first staff begins with a treble clef and a key signature of one flat (B-flat). The melody starts on a quarter note G4, followed by eighth notes A4, Bb4, and C5. The second staff continues the melody with eighth notes D5, E5, F5, and G5, then a quarter note G5, followed by eighth notes F5, E5, and D5. The piece concludes with a quarter rest.

14

Exercise 14 consists of two staves of music in 3/8 time. The first staff begins with a treble clef and a key signature of one flat (B-flat). The melody starts with a quarter note G4, followed by eighth notes A4 and Bb4. The second staff continues with eighth notes C5, D5, and E5, then a quarter note F5, followed by eighth notes G5, F5, and E5. The piece concludes with a quarter note D5.

15

Exercise 15 consists of two staves of music in 4/4 time. The first staff begins with a treble clef and a key signature of one flat (B-flat). The melody starts with a quarter note G4, followed by eighth notes A4 and Bb4. The second staff continues with eighth notes C5, D5, and E5, then a quarter note F5, followed by eighth notes G5, F5, and E5. The piece concludes with a quarter note D5.

16

Exercise 16 consists of two staves of music in 3/8 time. The first staff begins with a treble clef and a key signature of one flat (B-flat). The melody starts with a quarter note G4, followed by eighth notes A4 and Bb4. The second staff continues with eighth notes C5, D5, and E5, then a quarter note F5, followed by eighth notes G5, F5, and E5. The piece concludes with a quarter note D5.

17

Musical notation for exercise 17, consisting of two staves in 6/8 time. The first staff begins with a treble clef and a key signature of one sharp (F#). The melody features eighth and sixteenth notes with various accidentals. The second staff continues the melody with similar rhythmic patterns and accidentals.

18

Musical notation for exercise 18, consisting of two staves in 6/8 time. The first staff begins with a treble clef and a key signature of one sharp (F#). The melody is composed of eighth and sixteenth notes. The second staff continues the melody with similar rhythmic patterns and accidentals.

19

Musical notation for exercise 19, consisting of two staves in 4/4 time. The first staff begins with a treble clef and a key signature of one flat (Bb). The melody features eighth and sixteenth notes. The second staff continues the melody with similar rhythmic patterns and accidentals.

20

Musical notation for exercise 20, consisting of two staves in 3/4 time. The first staff begins with a treble clef and a key signature of one sharp (F#). The melody features quarter and eighth notes. The second staff continues the melody with similar rhythmic patterns and accidentals.

21

Exercise 21 consists of two staves of music in 6/8 time with a key signature of one sharp (F#). The first staff contains four measures of music, and the second staff contains four measures. The notation includes eighth and sixteenth notes, rests, and a sharp sign for the key signature.

22

Exercise 22 consists of two staves of music in 6/8 time with a key signature of one sharp (F#). The first staff contains four measures of music, and the second staff contains four measures. The notation includes eighth and sixteenth notes, rests, and a sharp sign for the key signature.

23

Exercise 23 consists of two staves of music in 5/8 time with a key signature of one sharp (F#). The first staff contains four measures of music, and the second staff contains four measures. The notation includes eighth and sixteenth notes, rests, and a sharp sign for the key signature. A triplet of eighth notes is indicated in the first measure of the second staff.

24

Exercise 24 consists of two staves of music in 4/4 time with a key signature of one sharp (F#). The first staff contains four measures of music, and the second staff contains four measures. The notation includes eighth and sixteenth notes, rests, and a sharp sign for the key signature. A triplet of eighth notes is indicated in the first measure of the second staff.

25

Exercise 25 consists of two staves of music in 6/8 time. The key signature has two flats (B-flat and E-flat). The first staff contains measures 1 and 2, featuring eighth and sixteenth notes with various accidentals. The second staff continues the melody in measures 3 and 4, including a triplet of eighth notes in measure 3.

26

Exercise 26 consists of two staves of music in 3/4 time. The key signature has two flats. The first staff contains measures 1 and 2, with a quarter rest in measure 2. The second staff continues the melody in measures 3 and 4, featuring eighth and sixteenth notes.

27

Exercise 27 consists of two staves of music in 4/4 time. The key signature has one sharp (F-sharp). The first staff contains measures 1 and 2. The second staff continues the melody in measures 3 and 4, ending with a triplet of eighth notes in measure 4.

28

Exercise 28 consists of two staves of music in 2/4 time. The key signature has one flat (B-flat). The first staff contains measures 1 and 2, with a triplet of eighth notes in measure 1. The second staff continues the melody in measures 3 and 4, featuring multiple triplet markings over eighth notes.

29

Exercise 29 consists of two staves of music in 12/8 time with a key signature of one flat (B-flat). The first staff begins with a treble clef and contains a melodic line with eighth and sixteenth notes, including a triplet of eighth notes. The second staff begins with a bass clef and contains a bass line with eighth and sixteenth notes, also including a triplet of eighth notes. The piece concludes with a double bar line.

30

Exercise 30 consists of two staves of music in 12/4 time with a key signature of one sharp (F-sharp). The first staff begins with a treble clef and contains a melodic line with quarter and eighth notes. The second staff begins with a bass clef and contains a bass line with quarter and eighth notes, including a triplet of eighth notes. The piece concludes with a double bar line.

31

Exercise 31 consists of two staves of music in 12/8 time with a key signature of one flat (B-flat). The first staff begins with a treble clef and contains a melodic line with eighth and sixteenth notes, including a triplet of eighth notes. The second staff begins with a bass clef and contains a bass line with eighth and sixteenth notes, also including a triplet of eighth notes. The piece concludes with a double bar line.

32

Exercise 32 consists of two staves of music in 4/4 time with a key signature of one sharp (F-sharp). The first staff begins with a treble clef and contains a melodic line with quarter and eighth notes, including a triplet of eighth notes. The second staff begins with a bass clef and contains a bass line with quarter and eighth notes, including a triplet of eighth notes. The piece concludes with a double bar line.

33

Exercise 33 consists of two staves of music in 7/8 time signature. The first staff contains four measures of music, and the second staff contains four measures. The key signature has one sharp (F#).

34

Exercise 34 consists of two staves of music in 6/8 time signature. The first staff contains four measures of music, and the second staff contains four measures. The key signature has two sharps (F# and C#).

35

Exercise 35 consists of two staves of music in 3/4 time signature. The first staff contains four measures of music, and the second staff contains four measures. The key signature has three flats (Bb, Eb, and Ab).

36

Exercise 36 consists of two staves of music in 6/8 time signature. The first staff contains four measures of music with guitar chords: D, Em/G, D/F#, Em A7, Bm, E7, and A. The second staff contains four measures of music with guitar chords: F# -/E Bm/D, Em -/D A/C#, D7/C, G/B Gm6/Bb D/A, and A7 D. The key signature has one sharp (F#).

41

Exercise 41 consists of two staves of music in 6/8 time. The first staff contains measures 1 and 2, featuring a melodic line with eighth and sixteenth notes. The second staff contains measures 3 and 4, continuing the melodic line with a triplet in measure 4.

42

Exercise 42 consists of two staves of music in 4/4 time. The first staff contains measures 1 and 2, featuring a melodic line with quarter and eighth notes. The second staff contains measures 3 and 4, continuing the melodic line with quarter and eighth notes. The label SMS06(B) is located at the bottom right of the second staff.

43

Exercise 43 consists of two staves of music in 3/4 time. The first staff contains measures 1 and 2, featuring a melodic line with quarter and eighth notes. The second staff contains measures 3 and 4, continuing the melodic line with quarter and eighth notes. The label SMS06(B) is located at the bottom right of the second staff.

44

Exercise 44 consists of two staves of music in 6/8 time. The first staff contains measures 1 and 2, featuring a melodic line with eighth and sixteenth notes. The second staff contains measures 3 and 4, continuing the melodic line with eighth and sixteenth notes. The label SMS06(B) is located at the bottom right of the second staff.

45

Exercise 45 consists of two staves of music in 3/4 time. The first staff contains measures 1 and 2, with a triplet of eighth notes in the second measure. The second staff contains measures 3 and 4, with a triplet of eighth notes in the third measure. The key signature has one sharp (F#).

SMS06(B)

46

Exercise 46 consists of two staves of music in 4/4 time. The first staff contains measures 1 and 2, with a triplet of eighth notes in the second measure. The second staff contains measures 3 and 4, with a triplet of eighth notes in the third measure. The key signature has two flats (Bb, Eb).

SMS06(B)

47

Exercise 47 consists of two staves of music in 5/8 time. The first staff contains measures 1 and 2. The second staff contains measures 3 and 4. The key signature has one sharp (F#).

SMS06(B)

48

Exercise 48 consists of two staves of music in 4/4 time. The first staff contains measures 1 and 2, with a triplet of eighth notes in the second measure. The second staff contains measures 3 and 4, with two triplet markings over eighth notes in the third measure. The key signature has two flats (Bb, Eb).

SMS06(E)

49

Exercise 49 consists of two staves of music in 6/8 time with a key signature of one sharp (F#). The first staff contains measures 1 through 4. The second staff contains measures 5 through 8. The notation includes eighth and sixteenth notes, rests, and accidentals. The exercise concludes with a double bar line. The label 'SMS06(E)' is located at the bottom right of the second staff.

SMS06(E)

50

Exercise 50 consists of two staves of music in 3/4 time with a key signature of two flats (Bb, Eb). The first staff contains measures 1 through 4, featuring a triplet of eighth notes in measure 3. The second staff contains measures 5 through 8, also featuring a triplet of eighth notes in measure 3. The notation includes eighth and sixteenth notes, rests, and accidentals. The exercise concludes with a double bar line. The label 'SMS06(E)' is located at the bottom right of the second staff.

SMS06(E)

51

Exercise 51 consists of two staves of music in 9/8 time with a key signature of two sharps (F#, C#). The first staff contains measures 1 through 4. The second staff contains measures 5 through 8. The notation includes eighth and sixteenth notes, rests, and accidentals. The exercise concludes with a double bar line. The label 'SMS06(E)' is located at the bottom right of the second staff.

SMS06(E)

52

Exercise 52 consists of two staves of music in 3/4 time with a key signature of two flats (Bb, Eb). The first staff contains measures 1 through 4, featuring a triplet of eighth notes in measure 4. The second staff contains measures 5 through 8, also featuring a triplet of eighth notes in measure 3. The notation includes eighth and sixteenth notes, rests, and accidentals. The exercise concludes with a double bar line. The label 'SMS06(E)' is located at the bottom right of the second staff.

SMS06(E)

53

SMS06(E)

54

WMS06(B)

55

WMS06(B)

56

WMS06(B)

57

Exercise 57 consists of two staves of music in 3/4 time with a key signature of one sharp (F#). The first staff contains measures 1 and 2. The second staff contains measures 3 and 4, featuring a triplet of eighth notes in the second measure.

WMS06(B)

58

Exercise 58 consists of two staves of music in 4/4 time with a key signature of one flat (Bb). The first staff contains measures 1 and 2. The second staff contains measures 3 and 4.

WMS06(B)

59

Exercise 59 consists of two staves of music in 5/8 time with a key signature of one flat (Bb). The first staff contains measures 1 and 2. The second staff contains measures 3 and 4.

WMS06(B)

60

Exercise 60 consists of two staves of music in 4/4 time with a key signature of one flat (Bb). The first staff contains measures 1 and 2, with a triplet of eighth notes in the second measure. The second staff contains measures 3 and 4, also with a triplet of eighth notes in the second measure.

WMS06(E)

61

WMS06(E)

62

WMS06(E)

63

WMS06(E)

64

WMS06(E)

65

WMS06(E)

66

WMS06(E)

67

SMS07(B)

68

SMS07(B)

69

SMS07(B)

70

SMS07(B)

71

SMS07(B)

72

SMS07(B)

73

Musical notation for exercise 73, measures 1-4. The first staff is in 4/4 time with a treble clef and a key signature of one sharp (F#). The second staff is in 4/4 time with a bass clef and a key signature of two flats (Bb). A triplet of eighth notes is marked with a '3' above it in the first staff.

SMS07(E)

74

Musical notation for exercise 74, measures 1-4. The first staff is in 6/8 time with a treble clef and a key signature of one sharp (F#). The second staff is in 6/8 time with a bass clef and a key signature of one sharp (F#).

SMS07(E)

75

Musical notation for exercise 75, measures 1-4. The first staff is in 3/4 time with a treble clef and a key signature of two flats (Bb). The second staff is in 3/4 time with a bass clef and a key signature of two flats (Bb). A triplet of eighth notes is marked with a '3' below it in the first staff.

SMS07(E)

76

Musical notation for exercise 76, measures 1-4. The first staff is in 6/8 time with a treble clef and a key signature of two sharps (D#). The second staff is in 6/8 time with a bass clef and a key signature of two sharps (D#).

SMS07(E)

77

SMS07(E)

78

SMS07(E)

79

WMS07(B)

80

WMS07(B)

81

Exercise 81 consists of two staves of music in treble clef with a key signature of one sharp (F#) and a 6/8 time signature. The first staff contains measures 1 through 4. The second staff contains measures 5 through 8. The music features eighth and sixteenth notes, with some triplets and slurs.

WMS07(B)

82

Exercise 82 consists of two staves of music in treble clef with a key signature of one flat (Bb) and a 3/4 time signature. The first staff contains measures 1 through 4. The second staff contains measures 5 through 8. The music features eighth and sixteenth notes, with a triplet in measure 8.

WMS07(B)

83

Exercise 83 consists of two staves of music in treble clef with a key signature of two sharps (F# and C#) and a 4/4 time signature. The first staff contains measures 1 through 4. The second staff contains measures 5 through 8. The music features eighth and sixteenth notes, with two triplets in the second staff.

WMS07(B)

84

Exercise 84 consists of two staves of music in treble clef with a key signature of one sharp (F#) and a 6/8 time signature. The first staff contains measures 1 through 4. The second staff contains measures 5 through 8. The music features eighth and sixteenth notes, with slurs and ties.

WMS07(B)

85

WMS07(E)

86

WMS07(E)

87

WMS07(E)

88

WMS07(E)

89

WMS07(E)

90

WMS07(E)

91

SMS08(B)

92

SMS08(B)

93

Musical notation for exercise 93, two staves in 4/4 time with a key signature of two flats. The first staff contains a melody with a triplet of eighth notes. The second staff contains a bass line with a triplet of eighth notes. The label SMS08(B) is at the bottom right.

94

Musical notation for exercise 94, two staves in 4/4 time with a key signature of two flats. The first staff contains a melody with eighth notes. The second staff contains a bass line with eighth notes. The label SMS08(B) is at the bottom right.

95

Musical notation for exercise 95, two staves in 3/4 time with a key signature of one sharp. The first staff contains a melody with eighth notes. The second staff contains a bass line with eighth notes. The label SMS08(B) is at the bottom right.

96

Musical notation for exercise 96, two staves in 6/8 time with a key signature of two flats. The first staff contains a melody with eighth notes. The second staff contains a bass line with eighth notes. The label SMS08(B) is at the bottom right.

97

Exercise 97 consists of two staves of music in 4/4 time. The first staff begins with a treble clef and a key signature of one sharp (F#). The melody is composed of eighth and quarter notes. The second staff continues the melody, featuring a triplet of eighth notes in the final measure. The exercise concludes with a double bar line.

SMS08(E)

98

Exercise 98 consists of two staves of music in 3/2 time. The first staff begins with a treble clef and a key signature of two sharps (F# and C#). The melody is composed of quarter and eighth notes. The second staff continues the melody, ending with a half note. The exercise concludes with a double bar line.

SMS08(E)

99

Exercise 99 consists of two staves of music in 12/8 time. The first staff begins with a treble clef and a key signature of two flats (Bb and Eb). The melody is composed of eighth and quarter notes. The second staff continues the melody, ending with a quarter note. The exercise concludes with a double bar line.

SMS08(E)

100

Exercise 100 consists of two staves of music in 2/4 time. The first staff begins with a treble clef and a key signature of three sharps (F#, C#, and G#). The melody is composed of eighth and quarter notes. The second staff continues the melody, featuring a triplet of eighth notes in the final measure. The exercise concludes with a double bar line.

SMS08(E)

101

SMS08(E)

102

SMS08(E)

103

WMS08(B)

104

WMS08(B)

105

Exercise 105 consists of two staves of music in 6/8 time, key of B-flat major. The first staff contains measures 1-4, and the second staff contains measures 5-8. The music features eighth and sixteenth notes with various rests and ties.

WMS08(B)

106

Exercise 106 consists of two staves of music in 3/4 time, key of B-flat major. The first staff contains measures 1-4, and the second staff contains measures 5-8. The music features quarter and eighth notes with various rests and ties.

WMS08(B)

107

Exercise 107 consists of two staves of music in 4/4 time, key of B major. The first staff contains measures 1-4, and the second staff contains measures 5-8. The music features quarter and eighth notes with various rests and ties.

WMS08(B)

108

Exercise 108 consists of two staves of music in 3/4 time, key of B-flat major. The first staff contains measures 1-4, and the second staff contains measures 5-8. The music features quarter and eighth notes, with triplets indicated by a '3' above or below the notes.

WMS08(B)

109

WMS08(E)

110

WMS08(E)

111

WMS08(E)

112

WMS08(E)

113

WMS08(E)

114

WMS08(E)

115

SMS09(B)

116

SMS09(B)

117

Musical notation for exercise 117, consisting of two staves in 4/4 time. The first staff contains a sequence of eighth and quarter notes. The second staff contains a similar sequence, ending with a triplet of eighth notes marked with a '3' above them.

SMS09(B)

118

Musical notation for exercise 118, consisting of two staves in 6/8 time with a key signature of one sharp (F#). The first staff contains a sequence of eighth and quarter notes. The second staff contains a similar sequence, ending with a triplet of eighth notes marked with a '3' above them.

SMS09(B)

119

Musical notation for exercise 119, consisting of two staves in 4/4 time. The first staff contains a sequence of eighth and quarter notes. The second staff contains a similar sequence, ending with a triplet of eighth notes marked with a '3' above them.

SMS09(E)

120

Musical notation for exercise 120, consisting of two staves in 6/8 time with a key signature of two flats (Bb, Eb). The first staff contains a sequence of eighth and quarter notes. The second staff contains a similar sequence, ending with a triplet of eighth notes marked with a '3' above them.

SMS09(E)

121

Two staves of musical notation in treble clef, key of A major (three sharps), and 3/4 time signature. The first staff contains a melody with two triplet markings. The second staff contains a bass line with a triplet marking.

SMS09(E)

122

Two staves of musical notation in treble clef, key of B-flat major (two flats), and 7/8 time signature. The first staff contains a melody. The second staff contains a bass line.

SMS09(E)

123

Two staves of musical notation in treble clef, key of B-flat major (two flats), and 4/4 time signature. The first staff contains a melody. The second staff contains a bass line with a triplet marking.

SMS10

124

Two staves of musical notation in treble clef, key of B-flat major (two flats), and 3/4 time signature. The first staff contains a melody. The second staff contains a bass line.

SMS10

125

SMS10

126

SMS10

127

WMS10

128

WMS10

129

WMS10

130

WMS10

131

SMS11

132

SMS11

133

SMS11

134

SMS11

135

WMS11

136

WMS11

137

WMS11

138

WMS11

139

SMS12

140

SMS12

141

SMS12

142

SMS12

143

WMS12

144

WMS12

145

WMS12

146

WMS12

147

WMS12

148

WMS12

149

Exercise 149 consists of two staves of music in 4/4 time. The first staff begins with a treble clef and a key signature of one sharp (F#). The melody is composed of eighth and quarter notes. The second staff continues the melody, ending with a double bar line. The label 'SMS13' is positioned at the bottom right of the second staff.

150

Exercise 150 consists of two staves of music in 3/4 time. The first staff begins with a treble clef and a key signature of two flats (Bb, Eb). The melody is composed of quarter and eighth notes. The second staff continues the melody, ending with a double bar line. The label 'SMS13' is positioned at the bottom right of the second staff.

151

Exercise 151 consists of two staves of music in 6/8 time. The first staff begins with a treble clef and a key signature of one sharp (F#). The melody is composed of eighth and sixteenth notes. The second staff continues the melody, ending with a double bar line. The label 'SMS13' is positioned at the bottom right of the second staff.

152

Exercise 152 consists of two staves of music in 3/4 time. The first staff begins with a treble clef and a key signature of two sharps (F#, C#). The melody is composed of quarter and eighth notes, with a triplet of eighth notes in the final measure. The second staff continues the melody, ending with a double bar line. The label 'SMS13' is positioned at the bottom right of the second staff.

153

Musical notation for exercise 153, consisting of two staves. The first staff contains four measures of music, with a triplet of eighth notes in the second measure and another triplet of eighth notes in the fourth measure. The second staff contains four measures of music, with a triplet of eighth notes in the second measure and another triplet of eighth notes in the fourth measure.

SMS13

154

Musical notation for exercise 154, consisting of two staves. The first staff is marked with a 11/8 time signature and contains four measures of music. The second staff contains four measures of music.

SMS13

155

Musical notation for exercise 155, consisting of two staves. The first staff is marked with a 4/4 time signature and contains four measures of music. The second staff contains four measures of music.

WMS13

156

Musical notation for exercise 156, consisting of two staves. The first staff is marked with a 3/4 time signature and contains four measures of music. The second staff contains four measures of music.

WMS13

157

Musical notation for exercise 157, consisting of two staves of music in 6/8 time with a key signature of one sharp (F#). The notation includes various rhythmic patterns such as eighth and sixteenth notes, and rests.

WMS13

158

Musical notation for exercise 158, consisting of two staves of music in 4/4 time with a key signature of one sharp (F#). The notation includes various rhythmic patterns such as eighth and sixteenth notes, and rests.

WMS13

159

Musical notation for exercise 159, consisting of two staves of music in 4/4 time with a key signature of one sharp (F#). The notation includes various rhythmic patterns such as eighth and sixteenth notes, and rests.

SMS14

160

Musical notation for exercise 160, consisting of two staves of music in 3/4 time with a key signature of one sharp (F#). The notation includes various rhythmic patterns such as eighth and sixteenth notes, and rests.

SMS14

161

SMS14

162

SMS14

163

WMS14

164

WMS14

165

Musical notation for exercise 165, consisting of two staves in 3/4 time with a key signature of two flats. The first staff contains a melody with eighth and quarter notes. The second staff contains a bass line with eighth notes and triplet markings over groups of three notes.

WMS14

166

Musical notation for exercise 166, consisting of two staves in 4/4 time with a key signature of one sharp. The first staff contains a melody with quarter and eighth notes. The second staff contains a bass line with eighth notes and triplet markings over groups of three notes.

WMS14

167

Musical notation for exercise 167, consisting of two staves in 4/4 time with a key signature of one sharp. The first staff contains a melody with quarter and eighth notes. The second staff contains a bass line with quarter and eighth notes, ending with a triplet of eighth notes.

SMS15

168

Musical notation for exercise 168, consisting of two staves in 3/4 time with a key signature of two flats. The first staff contains a melody with quarter and eighth notes. The second staff contains a bass line with quarter and eighth notes.

SMS15

169

3

3

SMS15

170

SMS15

SMS15

171

WMS15

WMS15

172

WMS15

WMS15

173

WMS15

174

WMS15

175

WMS15

176

WMS15

177

Exercise 177 consists of two staves of music in 4/4 time. The first staff begins with a treble clef and a key signature of one sharp (F#). The melody starts on a quarter note G4, followed by eighth notes A4, B4, C5, D5, E5, F#5, and G5. The second staff continues the melody with quarter notes G4, A4, B4, C5, D5, E5, F#5, and G5. The exercise concludes with a double bar line. The label 'SMS16' is positioned at the bottom right of the second staff.

178

Exercise 178 consists of two staves of music in 3/4 time. The first staff begins with a treble clef and a key signature of one sharp (F#). The melody starts with a dotted quarter note G4, followed by eighth notes A4, B4, C5, D5, E5, and F#5. The second staff continues the melody with quarter notes G4, A4, B4, C5, D5, E5, F#5, and G5. The exercise concludes with a double bar line. The label 'SMS16' is positioned at the bottom right of the second staff.

179

Exercise 179 consists of two staves of music in 4/4 time. The first staff begins with a treble clef and a key signature of two sharps (F# and C#). The melody starts with a dotted quarter note G4, followed by eighth notes A4, B4, C5, D5, E5, F#5, and G5. The second staff continues the melody with quarter notes G4, A4, B4, C5, D5, E5, F#5, and G5. A triplet of eighth notes (G4, A4, B4) is marked with a '3' above it. The exercise concludes with a double bar line. The label 'SMS16' is positioned at the bottom right of the second staff.

180

Exercise 180 consists of two staves of music in 6/8 time. The first staff begins with a treble clef and a key signature of two flats (Bb and Eb). The melody starts with a dotted quarter note G4, followed by eighth notes A4, B4, C5, D5, E5, F#5, and G5. The second staff continues the melody with quarter notes G4, A4, B4, C5, D5, E5, F#5, and G5. The exercise concludes with a double bar line. The label 'SMS16' is positioned at the bottom right of the second staff.

181

WMS16

182

WMS16

183

WMS16

184

WMS16

185

Exercise 185 consists of two staves of music. The first staff is in treble clef with a key signature of one sharp (F#) and a common time signature. It contains four measures of music. The second staff is also in treble clef with a key signature of one sharp and a common time signature. It contains four measures of music, including a triplet of eighth notes in the second measure. The exercise concludes with a double bar line and the text 'SMS17'.

186

Exercise 186 consists of two staves of music. The first staff is in treble clef with a key signature of two flats (Bb, Eb) and a 3/4 time signature. It contains four measures of music, including a triplet of eighth notes in the third measure. The second staff is also in treble clef with a key signature of two flats and a 3/4 time signature. It contains four measures of music, including a triplet of eighth notes in the third measure. The exercise concludes with a double bar line and the text 'SMS17'.

187

Exercise 187 consists of two staves of music. The first staff is in treble clef with a key signature of one flat (Bb) and a common time signature. It contains four measures of music. The second staff is also in treble clef with a key signature of one flat and a common time signature. It contains four measures of music, including a triplet of eighth notes in the second measure. The exercise concludes with a double bar line and the text 'SMS17'.

188

Exercise 188 consists of two staves of music. The first staff is in treble clef with a key signature of one flat (Bb) and a 6/8 time signature. It contains four measures of music. The second staff is also in treble clef with a key signature of one flat and a 6/8 time signature. It contains four measures of music. The exercise concludes with a double bar line and the text 'SMS17'.

189

SMS17

190

SMS17

191

SMS18

192

SMS18

193

Exercise 193 consists of two staves of music in a 2/4 time signature with a key signature of one flat (B-flat). The first staff contains measures 1 through 4, featuring a triplet of eighth notes in the second measure. The second staff contains measures 5 through 8, also featuring a triplet of eighth notes in the eighth measure. The piece concludes with a double bar line.

SMS18

194

Exercise 194 consists of two staves of music in a 6/8 time signature with a key signature of one sharp (F-sharp). The first staff contains measures 1 through 4, featuring a triplet of eighth notes in the second measure. The second staff contains measures 5 through 8, also featuring a triplet of eighth notes in the eighth measure. The piece concludes with a double bar line.

SMS18

195

Exercise 195 consists of two staves of music in a 4/4 time signature with a key signature of one sharp (F-sharp). The first staff contains measures 1 through 4, featuring triplet markings over eighth notes in the second, fourth, and eighth measures. The second staff contains measures 5 through 8, also featuring triplet markings over eighth notes in the second, fourth, and eighth measures. The piece concludes with a double bar line.

SMS18

196

Exercise 196 consists of two staves of music in a 7/8 time signature with a key signature of two flats (B-flat and E-flat). The first staff contains measures 1 through 4. The second staff contains measures 5 through 8, featuring a triplet of eighth notes in the eighth measure. The piece concludes with a double bar line.

SMS18

197

Exercise 197 consists of two staves of music in 4/4 time. The first staff contains four measures of music, primarily using eighth and quarter notes. The second staff continues the melody, featuring a triplet of eighth notes in the third measure. The key signature has one sharp (F#).

SMS19

198

Exercise 198 consists of two staves of music in 3/4 time. The first staff contains four measures, including a triplet of eighth notes in the second measure. The second staff continues the melody with various rhythmic patterns and accidentals. The key signature has one sharp (F#).

SMS19

199

Exercise 199 consists of two staves of music in 4/4 time. The first staff contains four measures, including a triplet of eighth notes in the fourth measure. The second staff continues the melody with various rhythmic patterns and accidentals. The key signature has one sharp (F#).

SMS19

200

Exercise 200 consists of two staves of music in 6/8 time. The first staff contains four measures, including a triplet of eighth notes in the second measure. The second staff continues the melody with various rhythmic patterns and accidentals. The key signature has two flats (Bb, Eb).

SMS19

201

Two staves of musical notation in 4/4 time, key signature of one flat. The first staff contains four measures. The second staff contains four measures, including a triplet of eighth notes in the third measure.

SMS19

202

Two staves of musical notation in 7/8 time, key signature of two sharps. The first staff contains seven measures. The second staff contains seven measures.

SMS19

203

Two staves of musical notation in 4/4 time, key signature of two sharps. The first staff contains four measures. The second staff contains four measures, including a triplet of eighth notes in the first measure.

204

Two staves of musical notation in 4/4 time, key signature of two flats. The first staff contains four measures. The second staff contains four measures, including a triplet of eighth notes in the third measure.

205

Exercise 205 consists of two staves of music in 4/4 time, key of D major. The first staff contains measures 1-4, and the second staff contains measures 5-8. The piece features eighth and sixteenth notes, with a triplet of eighth notes in measure 8. The notation includes natural signs, sharps, and a circled natural sign in measure 2.

206

Exercise 206 consists of two staves of music in 4/4 time, key of B minor. The first staff contains measures 1-4, and the second staff contains measures 5-8. The piece features eighth and sixteenth notes, with a triplet of eighth notes in measure 8. The notation includes natural signs, sharps, and a circled natural sign in measure 2.

207

Exercise 207 consists of two staves of music in 4/4 time, key of D major. The first staff contains measures 1-4, and the second staff contains measures 5-8. The piece features eighth and sixteenth notes, with a triplet of eighth notes in measure 8. The notation includes natural signs, sharps, and a circled natural sign in measure 2.

208

Exercise 208 consists of two staves of music in 4/4 time, key of B minor. The first staff contains measures 1-4, and the second staff contains measures 5-8. The piece features eighth and sixteenth notes, with a triplet of eighth notes in measure 8. The notation includes natural signs, sharps, and a circled natural sign in measure 2.

209

Exercise 209 consists of two staves of music in 4/4 time with a key signature of one sharp (F#). The first staff begins with a treble clef and contains a sequence of eighth and sixteenth notes, ending with a triplet of eighth notes. The second staff continues the melody, featuring a variety of note values and rests, also concluding with a triplet of eighth notes.

210

Exercise 210 consists of two staves of music in 4/4 time with a key signature of two flats (Bb, Eb). The first staff begins with a treble clef and contains a sequence of eighth and sixteenth notes, ending with a quarter note. The second staff continues the melody, featuring a variety of note values and rests, also concluding with a quarter note.

211

Exercise 211 consists of two staves of music in 4/4 time with a key signature of one sharp (F#). The first staff begins with a treble clef and contains a sequence of eighth and sixteenth notes, ending with a quarter note. The second staff continues the melody, featuring a variety of note values and rests, also concluding with a quarter note.

212

Exercise 212 consists of two staves of music in 6/8 time with a key signature of two sharps (F#, C#). The first staff begins with a treble clef and contains a sequence of eighth and sixteenth notes, ending with a quarter note. The second staff continues the melody, featuring a variety of note values and rests, also concluding with a quarter note.

213

Exercise 213 is written in 6/8 time. The first staff begins with a treble clef and a key signature of one sharp (F#). The melody consists of eighth and sixteenth notes, with some beamed sixteenth notes. The second staff continues the melody, featuring a triplet of eighth notes in the second measure and ending with a fermata.

214

Exercise 214 is written in 4/4 time. The first staff begins with a treble clef and a key signature of one flat (Bb). The melody is composed of quarter and eighth notes. The second staff continues the melody, featuring a triplet of eighth notes in the second measure and ending with a fermata.

215

Exercise 215 is written in 4/4 time. The first staff begins with a treble clef and a key signature of one sharp (F#). The melody consists of quarter and eighth notes. The second staff continues the melody, featuring a triplet of eighth notes in the second measure and ending with a fermata.

216

Exercise 216 is written in 3/4 time. The first staff begins with a treble clef and a key signature of one flat (Bb). The melody consists of quarter and eighth notes. The second staff continues the melody, featuring a triplet of eighth notes in the second measure and ending with a fermata.

217

Exercise 217 is written in 6/8 time with a key signature of one sharp (F#). The first staff contains four measures of music, and the second staff contains four measures. The notation includes eighth and sixteenth notes, rests, and a repeat sign at the end of the second staff.

218

Exercise 218 is written in 4/4 time with a key signature of one sharp (F#). The first staff contains four measures of music, and the second staff contains four measures. The notation includes quarter, eighth, and sixteenth notes, rests, and a repeat sign at the end of the second staff.

219

Exercise 219 is written in 6/8 time with a key signature of one sharp (F#). The first staff contains four measures of music, and the second staff contains four measures. The notation includes eighth and sixteenth notes, rests, and a repeat sign at the end of the second staff.

220

Exercise 220 is written in 4/4 time with a key signature of one sharp (F#). The first staff contains four measures of music, and the second staff contains four measures. The notation includes quarter, eighth, and sixteenth notes, rests, and a repeat sign at the end of the second staff.

221

Exercise 221 is written in 4/4 time. The first staff begins with a treble clef and a key signature of one sharp (F#). The melody consists of eighth and quarter notes, with some slurs and ties. The second staff continues the melody, also in 4/4 time, with similar rhythmic patterns and slurs.

222

Exercise 222 is written in 6/8 time. The first staff begins with a treble clef and a key signature of one sharp (F#). The melody features eighth and sixteenth notes, with some slurs and ties. The second staff continues the melody, also in 6/8 time, with similar rhythmic patterns and slurs.

223

Exercise 223 is written in 3/4 time. The first staff begins with a treble clef and a key signature of two flats (Bb, Eb). The melody consists of quarter and eighth notes, with some slurs and ties. The second staff continues the melody, also in 3/4 time, with similar rhythmic patterns and slurs.

224

Exercise 224 is written in 4/4 time. The first staff begins with a treble clef and a key signature of one sharp (F#). The melody consists of quarter and eighth notes, with some slurs and ties. The second staff continues the melody, also in 4/4 time, with similar rhythmic patterns and slurs.

225

Exercise 225 is written in 4/4 time. The first staff begins with a treble clef and a key signature of one sharp (F#). The melody consists of eighth and quarter notes, with a triplet of eighth notes in the fourth measure. The second staff continues the melody with eighth and quarter notes, ending with a double bar line.

226

Exercise 226 is written in 3/4 time. The first staff begins with a treble clef and a key signature of two flats (Bb, Eb). It features a triplet of eighth notes in the second measure. The second staff continues the melody with eighth and quarter notes, ending with a double bar line.

227

Exercise 227 is written in 4/4 time. The first staff begins with a treble clef and a key signature of one sharp (F#). The melody consists of eighth and quarter notes. The second staff continues the melody with eighth and quarter notes, ending with a double bar line.

228

Exercise 228 is written in 3/4 time. The first staff begins with a treble clef and a key signature of two flats (Bb, Eb). It features a triplet of eighth notes in the fourth measure. The second staff continues the melody with eighth and quarter notes, ending with a double bar line.

229

Exercise 229 is written in 6/8 time with a key signature of one sharp (F#). The first staff contains four measures of music, including a triplet of eighth notes in the second measure and a fermata over the final note. The second staff contains four measures, ending with a triplet of eighth notes in the final measure.

230

Exercise 230 is written in 4/4 time with a key signature of one sharp (F#). The first staff contains four measures of music. The second staff contains four measures, including a triplet of eighth notes in the second measure.

231

Exercise 231 is written in 4/4 time with a key signature of one sharp (F#). The first staff contains four measures of music. The second staff contains four measures, including a triplet of eighth notes in the second measure.

232

Exercise 232 is written in 4/4 time with a key signature of one sharp (F#). The first staff contains four measures of music. The second staff contains four measures, including a triplet of eighth notes in the second measure.

233

Exercise 233 is written in 6/8 time. The first staff contains a melodic line with eighth and sixteenth notes, including a triplet of eighth notes in the second measure. The second staff provides a harmonic accompaniment with eighth and sixteenth notes, also featuring a triplet in the second measure.

234

Exercise 234 is written in 4/4 time. The first staff features a simple melodic line with quarter and eighth notes. The second staff provides a harmonic accompaniment with quarter and eighth notes.

235

Exercise 235 is written in 3/4 time. The first staff contains a melodic line with quarter notes and a triplet of eighth notes in the second measure. The second staff provides a harmonic accompaniment with quarter notes and a triplet of eighth notes in the second measure.

236

Exercise 236 is written in 4/4 time. The first staff features a melodic line with quarter and eighth notes. The second staff provides a harmonic accompaniment with quarter and eighth notes.

237

Exercise 237 is written in 3/4 time with a key signature of one flat (Bb). The first staff contains the melody, and the second staff contains the accompaniment. The melody consists of eighth and quarter notes, while the accompaniment features a steady eighth-note pattern.

238

Exercise 238 is written in 6/8 time with a key signature of one sharp (F#). The first staff contains the melody, and the second staff contains the accompaniment. The melody is primarily composed of eighth notes, and the accompaniment consists of eighth-note patterns.

239

Exercise 239 is written in 6/8 time with a key signature of one flat (Bb). The first staff contains the melody, and the second staff contains the accompaniment. The melody features eighth and quarter notes, and the accompaniment consists of eighth-note patterns.

240

Exercise 240 is written in 3/4 time with a key signature of one flat (Bb). The first staff contains the melody, and the second staff contains the accompaniment. The melody consists of quarter and eighth notes, and the accompaniment features a steady eighth-note pattern.

241

Musical notation for exercise 241, consisting of two staves in 3/4 time. The first staff contains a melody starting with a quarter note G4, followed by eighth notes A4, B4, C5, and D5. The second staff contains a bass line starting with a quarter note G3, followed by eighth notes F3, E3, and D3, and a triplet of eighth notes C4, B3, and A3.

242

Musical notation for exercise 242, consisting of two staves in 4/4 time. The first staff contains a melody starting with a quarter note G4, followed by quarter notes A4, B4, and C5. The second staff contains a bass line starting with a quarter note G3, followed by quarter notes F3, E3, and D3, and a quarter note C4.

243

Musical notation for exercise 243, consisting of two staves in 3/4 time. The first staff contains a melody starting with a quarter note G4, followed by eighth notes A4, B4, and C5. The second staff contains a bass line starting with a quarter note G3, followed by eighth notes F3, E3, and D3, and a quarter note C4.

244

Musical notation for exercise 244, consisting of two staves in 4/4 time. The first staff contains a melody starting with a quarter note G4, followed by quarter notes A4, B4, and C5. The second staff contains a bass line starting with a quarter note G3, followed by quarter notes F3, E3, and D3, and a quarter note C4.

245

Exercise 245 is written in 6/8 time. The first staff begins with a treble clef, a key signature of one flat (Bb), and a 6/8 time signature. The melody consists of eighth and sixteenth notes, with some chromaticism in the second half. The second staff continues the melody with similar rhythmic patterns and chromatic movement.

246

Exercise 246 is written in 3/4 time. The first staff begins with a treble clef, a key signature of one flat (Bb), and a 3/4 time signature. The melody is primarily composed of quarter and eighth notes. The second staff continues the melody with a mix of quarter and eighth notes, ending with a fermata.

247

Exercise 247 is written in 3/4 time. The first staff begins with a treble clef, a key signature of one flat (Bb), and a 3/4 time signature. The melody features quarter notes and eighth notes, with some rests. The second staff continues the melody with quarter and eighth notes, ending with a fermata.

248

Exercise 248 is written in 3/4 time. The first staff begins with a treble clef, a key signature of one sharp (F#), and a 3/4 time signature. The melody consists of quarter and eighth notes. The second staff continues the melody with quarter and eighth notes, including a fermata. The third staff continues the melody with quarter and eighth notes, ending with a fermata.

249

Exercise 249 consists of two staves of music in 4/4 time. The first staff begins with a treble clef and a key signature of one sharp (F#). The melody starts on a half note G4, followed by quarter notes A4, B4, and C5. The second staff continues the melody with quarter notes D5, E5, and F#5, then a half note G5. The piece concludes with a double bar line.

250

Exercise 250 consists of two staves of music in 4/4 time. The first staff begins with a treble clef and a key signature of one sharp (F#). The melody starts on a half note G4, followed by quarter notes A4, B4, and C5. The second staff continues the melody with quarter notes D5, E5, and F#5, then a half note G5. The piece concludes with a double bar line.

251

Exercise 251 consists of two staves of music in 4/4 time. The first staff begins with a treble clef and a key signature of one sharp (F#). The melody starts on a half note G4, followed by quarter notes A4, B4, and C5. The second staff continues the melody with quarter notes D5, E5, and F#5, then a half note G5. The piece concludes with a double bar line.

252

Exercise 252 consists of two staves of music in 4/4 time. The first staff begins with a treble clef and a key signature of one sharp (F#). The melody starts on a half note G4, followed by quarter notes A4, B4, and C5. The second staff continues the melody with quarter notes D5, E5, and F#5, then a half note G5. The piece concludes with a double bar line.

253

Exercise 253 consists of two staves of music in treble clef. The first staff begins with a quarter note C4, followed by eighth notes D4, E4, F4, G4, A4, B4, and C5. The second staff continues with eighth notes D5, E5, F5, G5, A5, B5, and C6, followed by a quarter rest.

254

Exercise 254 consists of two staves of music in treble clef. The first staff begins with a quarter note C4, followed by eighth notes D4, E4, F4, G4, A4, B4, and C5. The second staff continues with eighth notes D5, E5, F5, G5, A5, B5, and C6, followed by a quarter rest.

255

Exercise 255 consists of two staves of music in treble clef. The first staff begins with a quarter note C4, followed by eighth notes D4, E4, F4, G4, A4, B4, and C5. The second staff continues with eighth notes D5, E5, F5, G5, A5, B5, and C6, followed by a quarter rest.

256

Exercise 256 consists of two staves of music in treble clef. The first staff begins with a quarter note C4, followed by eighth notes D4, E4, F4, G4, A4, B4, and C5. The second staff continues with eighth notes D5, E5, F5, G5, A5, B5, and C6, followed by a quarter rest.

257

Exercise 257 consists of two staves of music in 3/4 time. The first staff begins with a treble clef and a key signature of one sharp (F#). The melody starts on a middle C and moves stepwise up to G4, then descends to E4, D4, and C4. The second staff continues the melody, moving from C4 up to G4, then descending to E4, D4, and C4, ending with a fermata.

258

Exercise 258 consists of two staves of music in 6/8 time. The first staff begins with a treble clef and a key signature of one sharp (F#). The melody starts on a middle C and moves stepwise up to G4, then descends to E4, D4, and C4. The second staff continues the melody, moving from C4 up to G4, then descending to E4, D4, and C4, ending with a fermata.

259

Exercise 259 consists of two staves of music in 6/8 time. The first staff begins with a treble clef and a key signature of one sharp (F#). The melody starts on a middle C and moves stepwise up to G4, then descends to E4, D4, and C4. The second staff continues the melody, moving from C4 up to G4, then descending to E4, D4, and C4, ending with a fermata.

260

Exercise 260 consists of two staves of music in 9/8 time. The first staff begins with a treble clef and a key signature of one sharp (F#). The melody starts on a middle C and moves stepwise up to G4, then descends to E4, D4, and C4. The second staff continues the melody, moving from C4 up to G4, then descending to E4, D4, and C4, ending with a fermata.

261

Musical notation for exercise 261, consisting of two staves in 4/4 time. The first staff begins with a treble clef and a key signature of one sharp (F#). The melody consists of quarter and eighth notes, with a sharp sign on the fifth note of the third measure. The second staff continues the melody with similar rhythmic patterns and a sharp sign on the first note of the first measure.

262

Musical notation for exercise 262, consisting of two staves in 4/4 time. The first staff begins with a treble clef and a key signature of one sharp (F#). The melody consists of quarter and eighth notes, with a sharp sign on the fifth note of the third measure. The second staff continues the melody with similar rhythmic patterns and a sharp sign on the first note of the first measure.

263

Musical notation for exercise 263, consisting of two staves in 4/4 time. The first staff begins with a treble clef and a key signature of one sharp (F#). The melody consists of quarter and eighth notes, with a sharp sign on the fifth note of the third measure. The second staff continues the melody with similar rhythmic patterns and a sharp sign on the first note of the first measure.

264

Musical notation for exercise 264, consisting of two staves in 4/4 time. The first staff begins with a treble clef and a key signature of one sharp (F#). The melody consists of quarter and eighth notes, with a sharp sign on the fifth note of the third measure. The second staff continues the melody with similar rhythmic patterns and a sharp sign on the first note of the first measure.

265

Musical notation for exercise 265, consisting of two staves in 4/4 time. The first staff begins with a treble clef and a 4/4 time signature. The melody consists of quarter and eighth notes, with a key signature of one sharp (F#). The second staff continues the melody with similar rhythmic patterns and includes a double bar line at the end.

266

Musical notation for exercise 266, consisting of two staves in 4/4 time. The first staff begins with a treble clef and a 4/4 time signature. The melody consists of quarter and eighth notes, with a key signature of one sharp (F#). The second staff continues the melody with similar rhythmic patterns and includes a double bar line at the end.

267

Musical notation for exercise 267, consisting of two staves in 4/4 time. The first staff begins with a treble clef and a 4/4 time signature. The melody consists of quarter and eighth notes, with a key signature of one sharp (F#). The second staff continues the melody with similar rhythmic patterns and includes a double bar line at the end.

268

Musical notation for exercise 268, consisting of two staves in 4/4 time. The first staff begins with a treble clef and a 4/4 time signature. The melody consists of quarter and eighth notes, with a key signature of one sharp (F#). The second staff continues the melody with similar rhythmic patterns and includes a double bar line at the end.

269

Musical notation for exercise 269, consisting of two staves in 4/4 time. The first staff begins with a treble clef and a key signature of one sharp (F#). The melody consists of quarter and eighth notes, with some accidentals (sharps and naturals). The second staff continues the melody with similar rhythmic patterns and accidentals.

270

Musical notation for exercise 270, consisting of two staves in 4/4 time. The first staff begins with a treble clef and a key signature of one sharp (F#). The melody features eighth-note runs and quarter notes. The second staff continues the piece with similar rhythmic and melodic elements.

271

Musical notation for exercise 271, consisting of two staves in 4/4 time. The first staff begins with a treble clef and a key signature of one sharp (F#). The melody is composed of quarter and eighth notes. The second staff continues the melody with similar rhythmic patterns.

272

Musical notation for exercise 272, consisting of two staves in 3/4 time. The first staff begins with a treble clef and a key signature of two flats (Bb, Eb). The melody consists of quarter and eighth notes. The second staff continues the piece with similar rhythmic and melodic elements.

273

Exercise 273 consists of two staves of music in 4/4 time. The first staff begins with a treble clef and a key signature of one sharp (F#). The melody features eighth and sixteenth notes, with a triplet of eighth notes in the final measure. The second staff continues the melody, also featuring eighth and sixteenth notes and a triplet of eighth notes in the final measure.

274

Exercise 274 consists of two staves of music in 4/4 time. The first staff begins with a treble clef and a key signature of one sharp (F#). The melody includes eighth notes, a triplet of eighth notes, and a half note. The second staff continues the melody, featuring eighth notes, a triplet of eighth notes, and a half note with a fermata.

275

Exercise 275 consists of two staves of music in 4/4 time. The first staff begins with a treble clef and a key signature of one sharp (F#). The melody features eighth notes and a half note. The second staff continues the melody, featuring eighth notes, a half note, and a half note with a fermata.

276

Exercise 276 consists of two staves of music in 3/4 time. The first staff begins with a treble clef and a key signature of one sharp (F#). The melody features quarter notes and eighth notes. The second staff continues the melody, featuring quarter notes and eighth notes.

277

Exercise 277 consists of two staves of music in 6/8 time with a key signature of one sharp (F#). The first staff contains measures 1 through 4, and the second staff contains measures 5 through 8. The melody in the first staff features eighth and sixteenth notes, while the second staff provides a harmonic accompaniment with eighth and sixteenth notes.

278

Exercise 278 consists of two staves of music in 4/4 time with a key signature of one sharp (F#). The first staff contains measures 1 through 4, and the second staff contains measures 5 through 8. The melody in the first staff uses quarter and eighth notes, while the second staff features a more active accompaniment with eighth and sixteenth notes, including a triplet in measure 8.

279

Exercise 279 consists of two staves of music in 4/4 time with a key signature of one sharp (F#). The first staff contains measures 1 through 4, and the second staff contains measures 5 through 8. The melody in the first staff includes quarter, eighth, and sixteenth notes, with a triplet in measure 3. The second staff provides a harmonic accompaniment with eighth and sixteenth notes.

280

Exercise 280 consists of two staves of music in 4/4 time with a key signature of one sharp (F#). The first staff contains measures 1 through 4, and the second staff contains measures 5 through 8. The melody in the first staff uses quarter and eighth notes, while the second staff features a more active accompaniment with eighth and sixteenth notes.

281

Exercise 281 consists of two staves of music in 3/4 time. The first staff begins with a treble clef and a key signature of one sharp (F#). The melody starts on G4, moves to A4, then B4, and continues with eighth and quarter notes. The second staff continues the melody, featuring a descending eighth-note line and ending with a quarter rest.

282

Exercise 282 consists of two staves of music in 6/8 time with a key signature of one sharp (F#). The first staff begins with a treble clef and a melody of eighth and quarter notes. The second staff continues the melody with eighth-note patterns and ends with a quarter rest.

283

Exercise 283 consists of two staves of music in 4/4 time with a key signature of one sharp (F#). The first staff begins with a treble clef and a melody of quarter and eighth notes, including a triplet of eighth notes. The second staff continues the melody, also featuring a triplet of eighth notes, and ends with a half note.

284

Exercise 284 consists of two staves of music in 4/4 time with a key signature of one sharp (F#). The first staff begins with a treble clef and a melody of quarter and eighth notes. The second staff continues the melody with eighth-note patterns and ends with a quarter note.

285

Musical notation for exercise 285, consisting of two staves in 4/4 time. The first staff begins with a treble clef and a key signature of one sharp (F#). The melody consists of quarter and eighth notes, with some beamed eighth notes. The second staff continues the melody with similar rhythmic patterns and includes a few dotted notes.

286

Musical notation for exercise 286, consisting of two staves in 3/4 time. The first staff begins with a treble clef and a key signature of one sharp (F#). The melody is primarily composed of eighth and sixteenth notes, with some beaming. The second staff continues the melody with similar rhythmic patterns and includes a few dotted notes.

287

Musical notation for exercise 287, consisting of two staves in 6/8 time. The first staff begins with a treble clef and a key signature of one sharp (F#). The melody is primarily composed of eighth and sixteenth notes, with some beaming. The second staff continues the melody with similar rhythmic patterns and includes a few dotted notes.

288

Musical notation for exercise 288, consisting of two staves in 4/4 time. The first staff begins with a treble clef and a key signature of one sharp (F#). The melody consists of quarter and eighth notes, with some beamed eighth notes. The second staff continues the melody with similar rhythmic patterns and includes a few dotted notes.

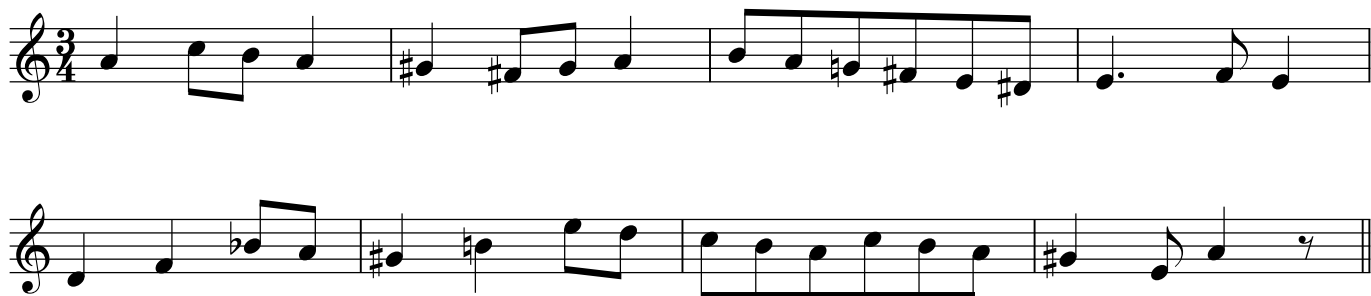
289



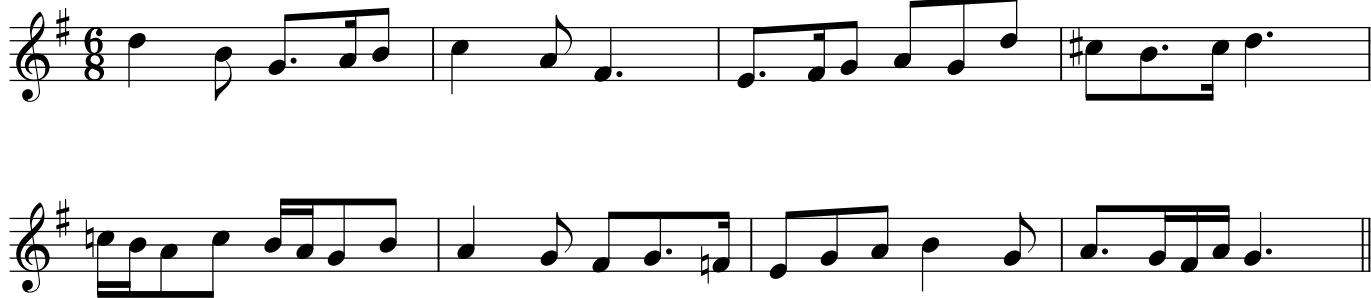
290



291



292



293

Exercise 293 is written in 3/4 time with a key signature of one flat (B-flat). The first staff contains four measures: a quarter note G4, a quarter note F4, a quarter note G4, and a quarter note A4. The second staff contains four measures: a quarter note B-flat4, a quarter note C5, a quarter note B-flat4, and a quarter note A4. The third staff contains four measures: a quarter note G4, a quarter note F4, a quarter note G4, and a quarter note A4. The fourth staff contains four measures: a quarter note B-flat4, a quarter note C5, a quarter note B-flat4, and a quarter note A4. The piece concludes with a double bar line.

294

Exercise 294 is written in 6/8 time with a key signature of two sharps (F# and C#). The first staff contains four measures: a quarter note G4, a quarter note A4, a quarter note B4, and a quarter note C5. The second staff contains four measures: a quarter note D5, a quarter note E5, a quarter note F#5, and a quarter note G5. The third staff contains four measures: a quarter note A5, a quarter note B5, a quarter note C#5, and a quarter note D6. The fourth staff contains four measures: a quarter note E6, a quarter note F#6, a quarter note G6, and a quarter note A6. The piece concludes with a double bar line.

295

Exercise 295 is written in 3/4 time with a key signature of one flat (B-flat). The first staff contains four measures: a quarter note G4, a quarter note F4, a quarter note G4, and a quarter note A4. The second staff contains four measures: a quarter note B-flat4, a quarter note C5, a quarter note B-flat4, and a quarter note A4. The third staff contains four measures: a quarter note G4, a quarter note F4, a quarter note G4, and a quarter note A4. The fourth staff contains four measures: a quarter note B-flat4, a quarter note C5, a quarter note B-flat4, and a quarter note A4. The piece concludes with a double bar line.

296

Exercise 296 is written in 3/4 time with a key signature of one flat (B-flat). The first staff contains four measures: a quarter note G4, a quarter note F4, a quarter note G4, and a quarter note A4. The second staff contains four measures: a quarter note B-flat4, a quarter note C5, a quarter note B-flat4, and a quarter note A4. The third staff contains four measures: a quarter note G4, a quarter note F4, a quarter note G4, and a quarter note A4. The fourth staff contains four measures: a quarter note B-flat4, a quarter note C5, a quarter note B-flat4, and a quarter note A4. The piece concludes with a double bar line.

297

Musical notation for exercise 297, consisting of two staves in 3/4 time with a key signature of one sharp (F#). The first staff contains a melody with eighth and quarter notes, including a triplet of eighth notes in the fourth measure. The second staff contains a bass line with eighth and quarter notes, also including a triplet of eighth notes in the fourth measure.

298

Musical notation for exercise 298, consisting of two staves in 3/4 time with a key signature of two flats (Bb, Eb). The first staff contains a melody with eighth and quarter notes. The second staff contains a bass line with eighth and quarter notes.

299

Musical notation for exercise 299, consisting of two staves in 4/4 time with a key signature of one flat (Bb). The first staff contains a melody with quarter and eighth notes. The second staff contains a bass line with quarter and eighth notes.

300

Musical notation for exercise 300, consisting of two staves in 4/4 time with a key signature of one flat (Bb). The first staff contains a melody with quarter and eighth notes. The second staff contains a bass line with quarter and eighth notes.

301

Exercise 301 consists of two staves of music in 4/4 time with a key signature of one sharp (F#). The first staff begins with a quarter note G4, followed by an eighth note F#4, and then a triplet of eighth notes (E4, D4, C4). The second staff continues with a quarter note B3, followed by an eighth note A3, and then a quintuplet of eighth notes (G3, F#3, E3, D3, C3). The piece concludes with a quarter rest.

302

Exercise 302 consists of two staves of music in 4/4 time with a key signature of one flat (Bb). The first staff begins with a quarter note Bb4, followed by an eighth note Ab4, and then a triplet of eighth notes (G4, F#4, E4). The second staff continues with a quarter note D4, followed by an eighth note C4, and then a triplet of eighth notes (Bb3, Ab3, G3). The piece concludes with a quarter rest.

303

Exercise 303 consists of two staves of music in 4/4 time with a key signature of two flats (Bb, Eb). The first staff begins with a quarter note Eb4, followed by an eighth note D4, and then a triplet of eighth notes (C4, Bb3, Ab3). The second staff continues with a quarter note G3, followed by an eighth note F3, and then a triplet of eighth notes (Eb3, D3, C3). The piece concludes with a quarter rest.

304

Exercise 304 consists of two staves of music in 3/4 time with a key signature of one sharp (F#). The first staff begins with a quarter note G4, followed by an eighth note F#4, and then a quarter note E4. The second staff continues with a quarter note D4, followed by an eighth note C4, and then a quarter note B3. The piece concludes with a quarter rest.

305

Exercise 305 is written in 6/8 time with a key signature of two flats (B-flat and E-flat). The first staff contains four measures of music, featuring eighth and sixteenth notes, with a trill-like figure in the third measure. The second staff continues the melody for four measures, ending with a quarter rest.

306

Exercise 306 is written in 4/4 time with a key signature of two flats. The first staff contains four measures, including a triplet of eighth notes in the fourth measure. The second staff continues the melody for four measures, ending with a quarter rest.

307

Exercise 307 is written in 4/4 time with a key signature of one sharp (F#). The first staff contains four measures of music. The second staff continues the melody for four measures, featuring a slur over the final two measures.

308

Exercise 308 is written in 4/4 time with a key signature of three flats (B-flat, E-flat, and A-flat). The first staff contains four measures of music. The second staff continues the melody for four measures, including a triplet of eighth notes in the third measure.

309

Exercise 309 is written in 3/4 time with a key signature of one sharp (F#). The first staff contains a melody of quarter notes: F#4, G4, A4, B4, C5, B4, A4, G4, F#4, E4, D4, C4. The second staff contains a bass line of quarter notes: C3, D3, E3, F#3, G3, A3, B3, C4, D4, E4, F#4, G4, A4, B4, C5, B4, A4, G4, F#4, E4, D4, C4.

310

Exercise 310 is written in 6/8 time with a key signature of one sharp (F#). The first staff contains a melody of eighth notes: F#4, G4, A4, B4, C5, B4, A4, G4, F#4, E4, D4, C4. The second staff contains a bass line of eighth notes: C3, D3, E3, F#3, G3, A3, B3, C4, D4, E4, F#4, G4, A4, B4, C5, B4, A4, G4, F#4, E4, D4, C4.

311

Exercise 311 is written in 4/4 time with a key signature of one sharp (F#). The first staff contains a melody of quarter notes: F#4, G4, A4, B4, C5, B4, A4, G4, F#4, E4, D4, C4. The second staff contains a bass line of quarter notes: C3, D3, E3, F#3, G3, A3, B3, C4, D4, E4, F#4, G4, A4, B4, C5, B4, A4, G4, F#4, E4, D4, C4.

312

Exercise 312 is written in 4/4 time with a key signature of one sharp (F#). The first staff contains a melody of quarter notes: F#4, G4, A4, B4, C5, B4, A4, G4, F#4, E4, D4, C4. The second staff contains a bass line of quarter notes: C3, D3, E3, F#3, G3, A3, B3, C4, D4, E4, F#4, G4, A4, B4, C5, B4, A4, G4, F#4, E4, D4, C4.

313

Exercise 313 consists of two staves of music in 4/4 time. The top staff begins with a treble clef and a key signature of one sharp (F#). The melody starts on a dotted quarter note, followed by eighth notes, and includes a quarter rest. The bottom staff provides a bass line with eighth and sixteenth notes, featuring a key signature change to two sharps (F# and C#) in the second measure.

314

Exercise 314 consists of two staves of music in 4/4 time. The top staff begins with a treble clef and a key signature of one sharp (F#). The melody features a dotted quarter note followed by eighth notes. The bottom staff provides a bass line with dotted quarter notes and eighth notes.

315

Exercise 315 consists of two staves of music in 6/8 time. The top staff begins with a treble clef and a key signature of two sharps (F# and C#). The melody starts with a dotted quarter note followed by eighth notes. The bottom staff provides a bass line with eighth and sixteenth notes, including a key signature change to one sharp (F#) in the second measure.

316

Exercise 316 consists of two staves of music in 4/4 time. The top staff begins with a treble clef and a key signature of one sharp (F#). The melody starts with a dotted quarter note followed by eighth notes. The bottom staff provides a bass line with eighth and sixteenth notes.

317

Exercise 317 consists of two staves of music in 4/4 time. The first staff begins with a treble clef and a key signature of one sharp (F#). The melody starts on G4, moving through A4, B4, and C5 in the first measure, then descends through B4, A4, G4, F#4, E4, D4, and C4 in the second measure. The second staff provides a harmonic accompaniment, starting with a G4 chord and moving through various chords and intervals to support the melody.

318

Exercise 318 consists of two staves of music in 4/4 time. The first staff begins with a treble clef and a key signature of one sharp (F#). The melody starts on G4, moving through A4, B4, and C5 in the first measure, then descends through B4, A4, G4, F#4, E4, D4, and C4 in the second measure. The second staff provides a harmonic accompaniment, starting with a G4 chord and moving through various chords and intervals to support the melody.

319

Exercise 319 consists of two staves of music in 3/4 time. The first staff begins with a treble clef and a key signature of one sharp (F#). The melody starts on G4, moving through A4, B4, and C5 in the first measure, then descends through B4, A4, G4, F#4, E4, D4, and C4 in the second measure. The second staff provides a harmonic accompaniment, starting with a G4 chord and moving through various chords and intervals to support the melody.

320

Exercise 320 consists of two staves of music in 6/8 time. The first staff begins with a treble clef and a key signature of one sharp (F#). The melody starts on G4, moving through A4, B4, and C5 in the first measure, then descends through B4, A4, G4, F#4, E4, D4, and C4 in the second measure. The second staff provides a harmonic accompaniment, starting with a G4 chord and moving through various chords and intervals to support the melody.

321

Exercise 321 consists of two staves of music in treble clef, 3/4 time, and the key of D major (one sharp). The first staff contains four measures: a quarter note D, an eighth note E, an eighth note F#, a quarter note G; a quarter note A, an eighth note B, an eighth note C, a quarter note D; a quarter note E, an eighth note F, an eighth note G, a quarter note A; and a quarter note B, an eighth note C, an eighth note D, a quarter note E. The second staff contains four measures: a quarter note F#, an eighth note G, an eighth note A, a quarter note B; a quarter note C, an eighth note D, an eighth note E, a quarter note F; a quarter note G, an eighth note A, an eighth note B, a quarter note C; and a quarter note D, an eighth note E, an eighth note F, a quarter note G. A triplet of eighth notes (A, B, C) is marked above the third measure of the second staff.

322

Exercise 322 consists of two staves of music in treble clef, 3/4 time, and the key of B minor (two flats). The first staff contains four measures: a quarter note B, an eighth note C, an eighth note D, a quarter note E; a quarter note F, an eighth note G, an eighth note A, a quarter note B; a quarter note C, an eighth note D, an eighth note E, a quarter note F; and a quarter note G, an eighth note A, an eighth note B, a quarter note C. The second staff contains four measures: a quarter note D, an eighth note E, an eighth note F, a quarter note G; a quarter note A, an eighth note B, an eighth note C, a quarter note D; a quarter note E, an eighth note F, an eighth note G, a quarter note A; and a quarter note B, an eighth note C, an eighth note D, a quarter note E. Triplet markings are present above the third and fourth measures of the second staff.

323

Exercise 323 consists of two staves of music in treble clef, 4/4 time, and the key of D major (one sharp). The first staff contains four measures: a quarter note D, a quarter note E, a quarter note F#, a quarter note G; a quarter note A, a quarter note B, a quarter note C, a quarter note D; a quarter note E, a quarter note F, a quarter note G, a quarter note A; and a quarter note B, a quarter note C, a quarter note D, a quarter note E. The second staff contains four measures: a quarter note F#, an eighth note G, an eighth note A, a quarter note B; a quarter note C, an eighth note D, an eighth note E, a quarter note F; a quarter note G, an eighth note A, an eighth note B, a quarter note C; and a quarter note D, an eighth note E, an eighth note F, a quarter note G.

324

Exercise 324 consists of two staves of music in treble clef, 4/4 time, and the key of D major (one sharp). The first staff contains four measures: a quarter note D, a quarter note E, a quarter note F#, a quarter note G; a quarter note A, a quarter note B, a quarter note C, a quarter note D; a quarter note E, a quarter note F, a quarter note G, a quarter note A; and a quarter note B, a quarter note C, a quarter note D, a quarter note E. The second staff contains four measures: a quarter note F#, an eighth note G, an eighth note A, a quarter note B; a quarter note C, an eighth note D, an eighth note E, a quarter note F; a quarter note G, an eighth note A, an eighth note B, a quarter note C; and a quarter note D, an eighth note E, an eighth note F, a quarter note G.

325

Exercise 325 consists of two staves of music in 3/4 time with a key signature of two flats (B-flat and E-flat). The first staff contains two measures: the first measure has a dotted quarter note followed by an eighth note, and the second measure has a quarter note followed by an eighth note. The second staff contains two measures: the first measure has a quarter note followed by an eighth note, and the second measure has a quarter note followed by an eighth note. The piece concludes with a double bar line.

326

Exercise 326 consists of two staves of music in 3/4 time with a key signature of two sharps (F# and C#). The first staff contains two measures: the first measure has a quarter note followed by an eighth note, and the second measure has a quarter note followed by an eighth note. The second staff contains two measures: the first measure has a quarter note followed by an eighth note, and the second measure has a quarter note followed by an eighth note. The piece concludes with a double bar line.

327

Exercise 327 consists of two staves of music in 4/4 time with a key signature of one sharp (F#). The first staff contains two measures: the first measure has a quarter note followed by an eighth note, and the second measure has a quarter note followed by an eighth note. The second staff contains two measures: the first measure has a quarter note followed by an eighth note, and the second measure has a quarter note followed by an eighth note. The piece concludes with a double bar line.

328

Exercise 328 consists of two staves of music in 4/4 time with a key signature of one sharp (F#). The first staff contains two measures: the first measure has a quarter note followed by an eighth note, and the second measure has a quarter note followed by an eighth note. The second staff contains two measures: the first measure has a quarter note followed by an eighth note, and the second measure has a quarter note followed by an eighth note. The piece concludes with a double bar line.

329

Exercise 329 is written in 6/8 time with a key signature of one sharp (F#). The first staff contains four measures of music, and the second staff contains four measures. The melody is primarily eighth-note based, with some quarter notes and rests.

330

Exercise 330 is written in 6/8 time with a key signature of two flats (Bb, Eb). The first staff contains four measures of music, and the second staff contains four measures. The melody features eighth-note patterns and quarter notes.

331

Exercise 331 is written in 4/4 time with a key signature of one sharp (F#). The first staff contains four measures of music, and the second staff contains four measures. The melody is composed of quarter and eighth notes.

332

Exercise 332 is written in 4/4 time with a key signature of two flats (Bb, Eb). The first staff contains four measures of music, and the second staff contains four measures. The melody consists of quarter and eighth notes.

333



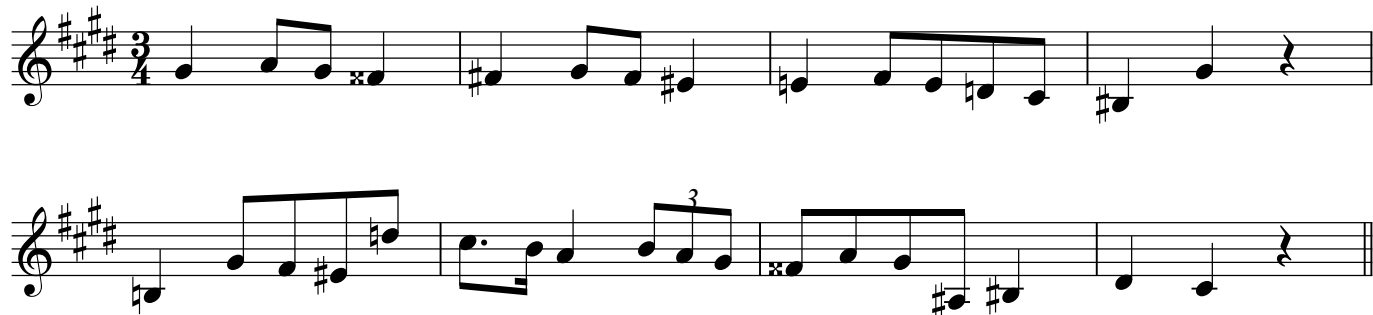
334



335



336



337



338



339



340



341

Exercise 341 is written for two staves in 3/4 time with a key signature of one sharp (F#). The melody in the upper staff begins on G4, moves to A4, B4, and C5, then descends through B4, A4, and G4. The lower staff provides harmonic support, starting with a D4 chord and moving through various intervals.

342

Exercise 342 is written for two staves in 5/8 time with a key signature of two flats (Bb, Eb). The melody in the upper staff consists of eighth-note patterns, starting on G4 and moving stepwise. The lower staff follows a similar rhythmic and melodic structure.

343

Exercise 343 is written for two staves in 4/4 time with a key signature of two flats (Bb, Eb). The melody in the upper staff features a mix of eighth and quarter notes, starting on G4. The lower staff provides a steady harmonic accompaniment.

344

Exercise 344 is written for two staves in 4/4 time with a key signature of one sharp (F#). The melody in the upper staff uses eighth and quarter notes, starting on G4. The lower staff features a rhythmic accompaniment with some chromatic movement.

345

Exercise 345 is written in 4/4 time. The first staff begins with a treble clef and a key signature of one sharp (F#). The melody consists of quarter and eighth notes, with a trill-like figure in the second measure. The second staff continues the melody with similar rhythmic patterns and includes a trill in the second measure.

346

Exercise 346 is written in 3/4 time. The first staff begins with a treble clef and a key signature of one sharp (F#). The melody is composed of quarter and eighth notes. The second staff continues the melody, featuring a trill in the second measure.

347

Exercise 347 is written in 6/8 time. The first staff begins with a treble clef and a key signature of one sharp (F#). The melody consists of quarter and eighth notes. The second staff continues the melody with similar rhythmic patterns and includes a trill in the second measure.

348

Exercise 348 is written in 4/4 time. The first staff begins with a treble clef and a key signature of one sharp (F#). The melody consists of quarter and eighth notes. The second staff continues the melody, featuring a trill in the second measure.

349

Exercise 349 consists of two staves of music in 4/4 time. The first staff begins with a treble clef and a key signature of one sharp (F#). It features a series of eighth notes, with two triplet markings over groups of three notes. The second staff continues the melodic line with similar eighth-note patterns and triplet markings, ending with a double bar line.

350

Exercise 350 consists of two staves of music in 4/4 time. The first staff begins with a treble clef and a key signature of one sharp (F#). It features a series of eighth notes, with a triplet marking over a group of three notes. The second staff continues the melodic line with similar eighth-note patterns and a triplet marking, ending with a double bar line.

351

Exercise 351 consists of two staves of music in 3/4 time. The first staff begins with a treble clef and a key signature of one sharp (F#). It features a series of eighth notes, with a triplet marking over a group of three notes. The second staff continues the melodic line with similar eighth-note patterns and a triplet marking, ending with a double bar line.

352

Exercise 352 consists of two staves of music in 6/8 time. The first staff begins with a treble clef and a key signature of one sharp (F#). It features a series of eighth notes, with a triplet marking over a group of three notes. The second staff continues the melodic line with similar eighth-note patterns and a triplet marking, ending with a double bar line.

353

Musical notation for exercise 353, consisting of two staves in 4/4 time with a key signature of one sharp (F#). The first staff contains a melodic line with a triplet of eighth notes in the second measure. The second staff contains a bass line with a triplet of eighth notes in the final measure.

354

Musical notation for exercise 354, consisting of two staves in 4/4 time with a key signature of one sharp (F#). The first staff contains a melodic line with a half note in the final measure. The second staff contains a bass line with a half note in the final measure.

355

Musical notation for exercise 355, consisting of two staves in 4/4 time with a key signature of one sharp (F#). The first staff contains a melodic line with a half note in the final measure. The second staff contains a bass line with a half note in the final measure.

356

Musical notation for exercise 356, consisting of two staves in 4/4 time with a key signature of one sharp (F#). The first staff contains a melodic line with a half note in the final measure. The second staff contains a bass line with a half note in the final measure.

357

Exercise 357 consists of two staves of music in 3/4 time. The first staff is in C major and the second is in D major. The first staff contains four measures of eighth-note patterns. The second staff contains four measures, including a triplet of eighth notes in the third measure and a fermata over the final note.

358

Exercise 358 consists of two staves of music in 6/8 time. The first staff is in C major and the second is in D major. Both staves feature eighth-note patterns across four measures each.

359

Exercise 359 consists of two staves of music in 4/4 time. The first staff is in C major and the second is in D major. The second staff includes a triplet of eighth notes in the fourth measure.

360

Exercise 360 consists of two staves of music in 3/4 time. The first staff is in C major and the second is in D major. The second staff includes a fermata over the final note.

361

Musical notation for exercise 361, consisting of two staves in 2/4 time. The first staff has a treble clef and a key signature of one sharp (F#). The second staff has a treble clef and a key signature of two sharps (F# and C#). Both staves contain eighth and sixteenth notes, with a triplet of eighth notes in the second measure of the second staff.

362

Musical notation for exercise 362, consisting of two staves in 4/4 time. The first staff has a treble clef and a key signature of one sharp (F#). The second staff has a treble clef and a key signature of two sharps (F# and C#). Both staves contain eighth and sixteenth notes.

363

Musical notation for exercise 363, consisting of two staves in 6/8 time. The first staff has a treble clef and a key signature of one sharp (F#). The second staff has a treble clef and a key signature of two sharps (F# and C#). Both staves contain eighth and sixteenth notes, with some beamed sixteenth notes.

364

Musical notation for exercise 364, consisting of two staves in 4/4 time. The first staff has a treble clef and a key signature of one sharp (F#). The second staff has a treble clef and a key signature of two sharps (F# and C#). Both staves contain eighth and sixteenth notes, with a triplet of eighth notes in the second measure of the second staff.

365

Exercise 365 is written in 3/4 time with a key signature of three flats (B-flat, E-flat, A-flat). The first staff contains four measures of music: a quarter note, a quarter note, a quarter note, and a quarter note. The second staff contains four measures: a quarter note, a quarter note, a quarter note, and a quarter note. The key signature is indicated by three flats on the treble clef.

366

Exercise 366 is written in 2/4 time with a key signature of two flats (B-flat, E-flat). The first staff contains four measures: a quarter note, a quarter note, a quarter note, and a quarter note. The second staff contains four measures: a quarter note, a quarter note, a quarter note, and a quarter note. The key signature is indicated by two flats on the treble clef.

367

Exercise 367 is written in 6/8 time with a key signature of one sharp (F#). The first staff contains four measures: a quarter note, a quarter note, a quarter note, and a quarter note. The second staff contains four measures: a quarter note, a quarter note, a quarter note, and a quarter note. The key signature is indicated by one sharp on the treble clef.

368

Exercise 368 is written in 3/2 time with a key signature of three flats (B-flat, E-flat, A-flat). The first staff contains four measures: a quarter note, a quarter note, a quarter note, and a quarter note. The second staff contains four measures: a quarter note, a quarter note, a quarter note, and a quarter note. The key signature is indicated by three flats on the treble clef.

369

Musical notation for exercise 369, consisting of two staves in treble clef with a key signature of two sharps (F# and C#) and a 3/4 time signature. The first staff contains four measures of music, and the second staff contains four measures of music.

370

Musical notation for exercise 370, consisting of two staves in treble clef with a key signature of two flats (Bb and Eb) and a 4/4 time signature. The first staff contains four measures of music, and the second staff contains four measures of music.

371

Musical notation for exercise 371, consisting of two staves in treble clef with a key signature of one flat (Bb) and a 9/16 time signature. The first staff contains four measures of music, and the second staff contains four measures of music.

372

Musical notation for exercise 372, consisting of two staves in treble clef with a key signature of one flat (Bb) and a 3/8 time signature. The first staff contains four measures of music, and the second staff contains four measures of music.

373

Exercise 373 is written in 12/8 time with a key signature of two sharps (F# and C#). The first staff contains four measures of music, and the second staff contains four measures. The melody is primarily eighth and sixteenth notes, with some dotted rhythms.

374

Exercise 374 is written in 3/4 time with a key signature of one sharp (F#). The first staff contains four measures, and the second staff contains four measures. The melody features a mix of quarter, eighth, and sixteenth notes.

375

Exercise 375 is written in 4/4 time with a key signature of one sharp (F#). The first staff contains four measures, and the second staff contains four measures. The melody is composed of eighth and sixteenth notes.

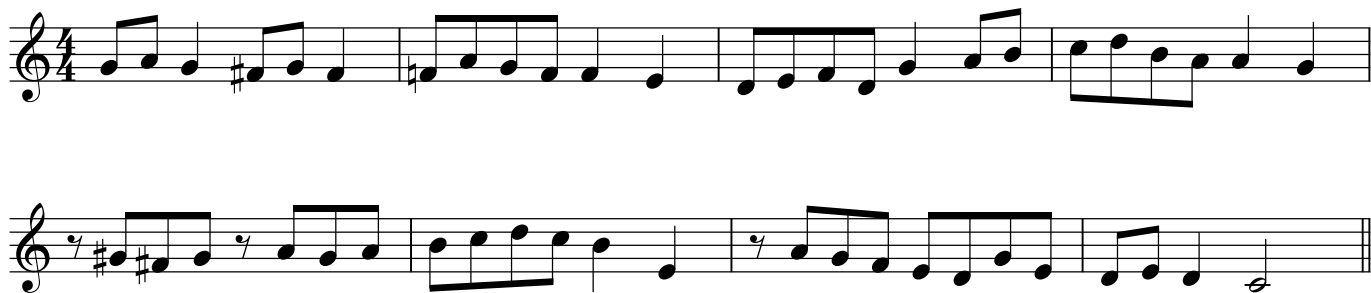
376

Exercise 376 is written in 4/4 time with a key signature of one sharp (F#). The first staff contains four measures, and the second staff contains four measures. The melody includes quarter, eighth, and sixteenth notes.

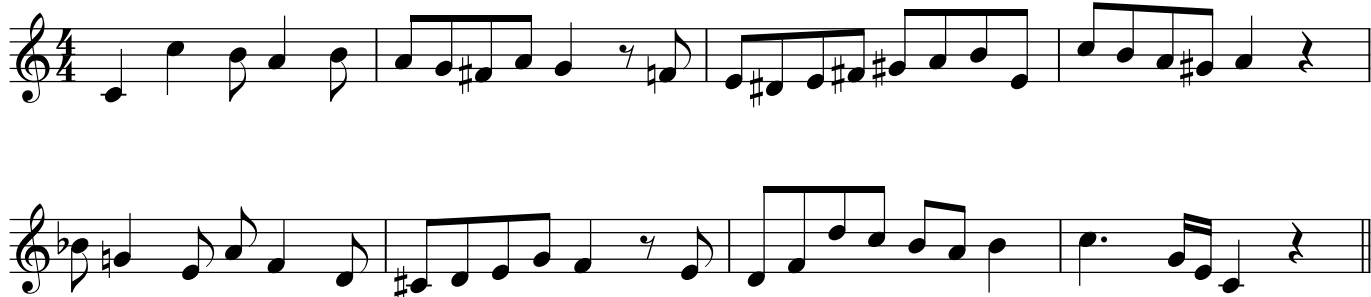
377



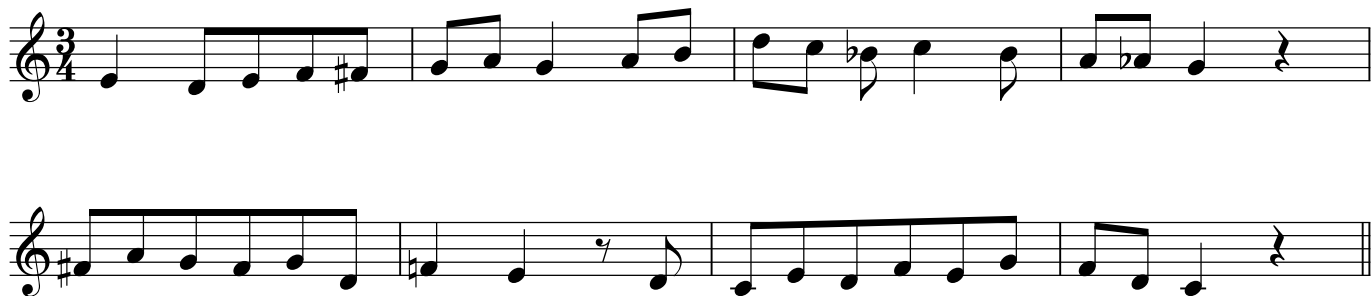
378



379



380



381

Exercise 381 is written in 6/8 time. The first staff begins with a treble clef and a key signature of one sharp (F#). The melody consists of eighth and sixteenth notes, with some slurs and ties. The second staff continues the melody, featuring more complex rhythmic patterns and slurs.

382

Exercise 382 is written in 4/4 time. The first staff begins with a treble clef and a key signature of one sharp (F#). The melody is composed of quarter and eighth notes, with some slurs. The second staff continues the melody, featuring a key signature change to two flats (Bb) and more complex rhythmic patterns.

383

Exercise 383 is written in 3/4 time. The first staff begins with a treble clef and a key signature of one sharp (F#). The melody is composed of quarter and eighth notes, with some slurs. The second staff continues the melody, featuring a key signature change to two flats (Bb) and more complex rhythmic patterns.

384

Exercise 384 is written in 2/4 time. The first staff begins with a treble clef and a key signature of two flats (Bb). The melody is composed of quarter and eighth notes, with some slurs and triplets. The second staff continues the melody, featuring a key signature change to one flat (F) and more complex rhythmic patterns.

385

Exercise 385 is written in 4/4 time. The first staff begins with a treble clef and a key signature of one sharp (F#). The melody consists of eighth and quarter notes, ending with a quarter rest. The second staff continues the melody with similar rhythmic patterns, also ending with a quarter rest.

386

Exercise 386 is written in 6/8 time. The first staff begins with a treble clef and a key signature of one sharp (F#). The melody features eighth and quarter notes with some rests, ending with a quarter rest. The second staff continues the melody, ending with a quarter rest.

387

Exercise 387 is written in 4/4 time. The first staff begins with a treble clef and a key signature of one flat (Bb). The melody consists of quarter and eighth notes, ending with a quarter rest. The second staff continues the melody, ending with a quarter rest.

388

Exercise 388 is written in 3/4 time. The first staff begins with a treble clef and a key signature of two sharps (F# and C#). The melody consists of quarter and eighth notes, ending with a quarter rest. The second staff continues the melody, featuring a triplet of eighth notes in the final measure, ending with a quarter rest.

393

Exercise 393 is written in 3/4 time with a key signature of one flat (B-flat). The first staff contains four measures of music: a quarter note G4, an eighth note A4, a quarter note B-flat4, a quarter note C5, a quarter note D5, a quarter note E5, a quarter note F5, and a quarter note G5. The second staff contains four measures: a quarter note G4, an eighth note A4, a quarter note B-flat4, a quarter note C5, a quarter note D5, a quarter note E5, a quarter note F5, and a quarter note G5.

394

Exercise 394 is written in 4/4 time with a key signature of one flat (B-flat). The first staff contains four measures: a quarter note G4, a quarter note A4, a quarter note B-flat4, a quarter note C5, a quarter note D5, a quarter note E5, a quarter note F5, and a quarter note G5. The second staff contains four measures: a quarter note G4, a quarter note A4, a quarter note B-flat4, a quarter note C5, a quarter note D5, a quarter note E5, a quarter note F5, and a quarter note G5.

395

Exercise 395 is written in 4/4 time with a key signature of one flat (B-flat). The first staff contains four measures: a quarter note G4, a quarter note A4, a quarter note B-flat4, a quarter note C5, a quarter note D5, a quarter note E5, a quarter note F5, and a quarter note G5. The second staff contains four measures: a quarter note G4, a quarter note A4, a quarter note B-flat4, a quarter note C5, a quarter note D5, a quarter note E5, a quarter note F5, and a quarter note G5.

396

Exercise 396 is written in 6/8 time with a key signature of one flat (B-flat). The first staff contains four measures: a quarter note G4, a quarter note A4, a quarter note B-flat4, a quarter note C5, a quarter note D5, a quarter note E5, a quarter note F5, and a quarter note G5. The second staff contains four measures: a quarter note G4, a quarter note A4, a quarter note B-flat4, a quarter note C5, a quarter note D5, a quarter note E5, a quarter note F5, and a quarter note G5.

397

Exercise 397 is written in 4/4 time with a key signature of one sharp (F#). The first staff contains a melodic line with eighth and sixteenth notes, including a triplet of eighth notes in the final measure. The second staff provides a harmonic accompaniment with a mix of eighth and sixteenth notes.

398

Exercise 398 is written in 3/4 time with a key signature of two flats (Bb, Eb). The first staff features a melodic line with eighth and sixteenth notes. The second staff provides a harmonic accompaniment with a mix of eighth and sixteenth notes.

399

Exercise 399 is written in 3/4 time with a key signature of two flats (Bb, Eb). The first staff features a melodic line with eighth and sixteenth notes. The second staff provides a harmonic accompaniment with a mix of eighth and sixteenth notes, including a triplet of eighth notes and a five-note fingering (1-2-3-4-5) in the final measure.

400

Exercise 400 is written in 3/4 time with a key signature of two flats (Bb, Eb). The first staff features a melodic line with eighth and sixteenth notes. The second staff provides a harmonic accompaniment with a mix of eighth and sixteenth notes.

401

Exercise 401 consists of two staves of music in 4/4 time with a key signature of one sharp (F#). The first staff begins with a quarter note G4, followed by eighth notes A4, B4, C5, and D5. The second staff begins with a quarter note G4, followed by eighth notes F#4, E4, D4, and C4, then a triplet of eighth notes B3, A3, and G3.

402

Exercise 402 consists of two staves of music in 6/8 time with a key signature of two flats (Bb, Eb). The first staff begins with a quarter note G3, followed by eighth notes A3, Bb3, and C4. The second staff begins with a quarter note G3, followed by eighth notes Ab3, G3, F3, and Eb3, then a triplet of eighth notes D3, C3, and Bb2.

403

Exercise 403 consists of two staves of music in 4/4 time with a key signature of one sharp (F#). The first staff begins with a quarter note G4, followed by eighth notes A4, B4, and C5, then a triplet of eighth notes D5, C5, and B4. The second staff begins with a quarter note G4, followed by eighth notes F#4, E4, D4, and C4, then a triplet of eighth notes B3, A3, and G3.

404

Exercise 404 consists of two staves of music in 6/8 time with a key signature of one sharp (F#). The first staff begins with a quarter note G4, followed by eighth notes A4, B4, and C5. The second staff begins with a quarter note G4, followed by eighth notes F#4, E4, D4, and C4, then a triplet of eighth notes B3, A3, and G3.

405

Exercise 405 consists of two staves of music in 4/4 time. The first staff begins with a treble clef and a key signature of one sharp (F#). The melody starts with a quarter rest, followed by a quarter note G4, an eighth note A4, and a quarter note B4. The second staff continues the melody, featuring a quarter note C5, an eighth note B4, and a quarter note A4. A triplet of eighth notes (G4, F#4, E4) is marked with a '3' above it. The exercise concludes with a quarter rest.

406

Exercise 406 consists of two staves of music in 3/4 time. The first staff begins with a treble clef and a key signature of one sharp (F#). The melody starts with a quarter note G4, an eighth note A4, and a quarter note B4. The second staff continues the melody, featuring a quarter note C5, an eighth note B4, and a quarter note A4. A triplet of eighth notes (G4, F#4, E4) is marked with a '3' above it. The exercise concludes with a quarter rest.

407

Exercise 407 consists of two staves of music in 12/8 time. The first staff begins with a treble clef and a key signature of three flats (Bb, Eb, Ab). The melody starts with a quarter note G3, an eighth note A3, and a quarter note B3. The second staff continues the melody, featuring a quarter note C4, an eighth note B3, and a quarter note A3. The exercise concludes with a quarter rest.

408

Exercise 408 consists of two staves of music in 4/4 time. The first staff begins with a treble clef and a key signature of one sharp (F#). The melody starts with a quarter note G4, an eighth note A4, and a quarter note B4. The second staff continues the melody, featuring a quarter note C5, an eighth note B4, and a quarter note A4. A triplet of eighth notes (G4, F#4, E4) is marked with a '3' above it. The exercise concludes with a quarter rest.

SMS20

409

SMS20

410

SMS20

411

SMS20

412

SMS20

413

SMS20

414

SMS20

415

SMS20

416

T20A

417

Musical score for exercise 417, measures 1-2. The first staff is in 3/4 time with a treble clef and a key signature of one flat. It features a triplet of eighth notes in the first measure. The second staff is in 3/4 time with a treble clef and a key signature of one flat, continuing the melody. The label T20A is at the end of the second staff.

418

Musical score for exercise 418, measures 1-2. The first staff is in 6/8 time with a treble clef and a key signature of two sharps. The second staff is in 6/8 time with a treble clef and a key signature of two sharps, continuing the melody. The label T20A is at the end of the second staff.

419

Musical score for exercise 419, measures 1-2. The first staff is in 4/4 time with a treble clef and a key signature of one flat. The second staff is in 4/4 time with a treble clef and a key signature of one flat, featuring triplet markings over eighth notes. The label T20A is at the end of the second staff.

420

Musical score for exercise 420, measures 1-2. The first staff is in 6/8 time with a treble clef and a key signature of two sharps. The second staff is in 6/8 time with a treble clef and a key signature of two sharps, continuing the melody. The label T20A is at the end of the second staff.

421

Musical notation for exercise 421, consisting of two staves in 3/4 time with a key signature of two flats. The first staff contains a melody with a quarter rest. The second staff contains a bass line with a triplet of eighth notes. The exercise concludes with a double bar line and the label T20A.

422

Musical notation for exercise 422, consisting of two staves in 4/4 time with a key signature of two flats. The first staff contains a melody. The second staff contains a bass line with a triplet of eighth notes. The exercise concludes with a double bar line and the label T20A.

423

Musical notation for exercise 423, consisting of two staves in 3/4 time with a key signature of two flats. The first staff contains a melody with a triplet of eighth notes. The second staff contains a bass line with a triplet of eighth notes. The exercise concludes with a double bar line and the label T20A.

424

Musical notation for exercise 424, consisting of two staves in 6/8 time with a key signature of two flats. The first staff contains a melody with quarter notes and eighth notes. The second staff contains a bass line with eighth notes. The exercise concludes with a double bar line and the label T20A.

425

Exercise 425 is written in 3/4 time with a key signature of one flat (B-flat). The first staff contains four measures of music, featuring eighth and quarter notes with various accidentals. The second staff continues the piece with similar rhythmic patterns and includes a triplet of eighth notes in the final measure.

426

Exercise 426 is written in 3/4 time with a key signature of one flat. The first staff contains four measures of music. The second staff continues the piece and includes a triplet of eighth notes and a quintuplet of eighth notes in the final measure.

427

Exercise 427 is written in 3/4 time with a key signature of one flat. The first staff contains four measures of music. The second staff continues the piece and ends with a double bar line and a 4/4 time signature.

428

Exercise 428 is written in 4/4 time with a key signature of one flat. The first staff contains four measures of music. The second staff continues the piece and ends with a double bar line and a 6/8 time signature.

429

Musical notation for exercise 429, consisting of two staves in 6/8 time. The first staff starts with a treble clef and a key signature of one sharp (F#). The second staff starts with a treble clef and a key signature of one flat (Bb). Both staves contain eighth and sixteenth note patterns with various accidentals.

430

Musical notation for exercise 430, consisting of two staves in 4/4 time. The first staff starts with a treble clef and a key signature of one sharp (F#). The second staff starts with a treble clef and a key signature of one flat (Bb). The second staff includes a triplet of eighth notes.

431

Musical notation for exercise 431, consisting of two staves in 6/8 time. The first staff starts with a treble clef and a key signature of one flat (Bb). The second staff starts with a treble clef and a key signature of one flat (Bb). Both staves contain eighth and sixteenth note patterns.

432

Musical notation for exercise 432, consisting of two staves in 3/4 time. The first staff starts with a treble clef and a key signature of one sharp (F#). The second staff starts with a treble clef and a key signature of one sharp (F#). The second staff includes three triplet markings over eighth notes.

433

Musical notation for exercise 433, consisting of two staves in 4/4 time with a key signature of one sharp (F#). The first staff contains a melodic line with a triplet of eighth notes in the second measure. The second staff contains a bass line with a triplet of eighth notes in the second measure.

434

Musical notation for exercise 434, consisting of two staves in 2/4 time with a key signature of one sharp (F#). Both staves contain continuous eighth-note patterns.

435

Musical notation for exercise 435, consisting of two staves in 3+2/8 time with a key signature of two flats (Bb, Eb). Both staves contain continuous eighth-note patterns.

436

Musical notation for exercise 436, consisting of two staves in 4/4 time with a key signature of two flats (Bb, Eb). The first staff contains a melodic line with a half-note rest in the final measure. The second staff contains a bass line with triplets of eighth notes in the first three measures.

437

Exercise 437 is written in 6/8 time. The first staff features a treble clef and a key signature of one sharp (F#). The melody consists of eighth and sixteenth notes, with some notes beamed together. The second staff is in the bass clef and features a key signature of one flat (Bb). It contains a bass line with eighth and sixteenth notes, including some triplets and a final measure with a fermata.

438

Exercise 438 is written in 6/8 time. The first staff is in the treble clef with a key signature of one flat (Bb). The melody is composed of eighth and sixteenth notes. The second staff is in the bass clef with a key signature of one flat (Bb) and contains a bass line with eighth and sixteenth notes, including some beamed eighth notes.

439

Exercise 439 is written in 4/4 time. The first staff is in the treble clef with a key signature of one sharp (F#). The melody consists of quarter and eighth notes. The second staff is in the bass clef with a key signature of one sharp (F#) and contains a bass line with quarter and eighth notes.

440

Exercise 440 is written in 4/4 time. The first staff is in the treble clef with a key signature of one sharp (F#). The melody consists of quarter and eighth notes. The second staff is in the bass clef with a key signature of one sharp (F#) and contains a bass line with quarter and eighth notes.

441

Exercise 441 consists of two staves of music in 4/4 time. The first staff begins with a treble clef and a key signature of one sharp (F#). The melody starts on G4, moving to A4, B4, and C5 in the first measure. The second staff continues the melody, featuring a triplet of eighth notes in the final measure.

442

Exercise 442 consists of two staves of music in 3/4 time. The first staff begins with a treble clef and a key signature of one sharp (F#). The melody starts on G4, moving to A4, B4, and C5 in the first measure. The second staff continues the melody, featuring a triplet of eighth notes in the final measure.

443

Exercise 443 consists of two staves of music in 6/8 time. The first staff begins with a treble clef and a key signature of one sharp (F#). The melody starts on G4, moving to A4, B4, and C5 in the first measure. The second staff continues the melody, featuring a triplet of eighth notes in the final measure.

444

Exercise 444 consists of two staves of music in 4/4 time. The first staff begins with a treble clef and a key signature of one sharp (F#). The melody starts on G4, moving to A4, B4, and C5 in the first measure. The second staff continues the melody, featuring a triplet of eighth notes in the final measure.

445

Exercise 445 is written in 3/4 time. The first staff (treble clef) contains four measures of music: G4 quarter, A4 quarter, B4 quarter, C5 quarter; G4 quarter, F#4 quarter, E4 quarter, D4 quarter; C4 quarter, B3 quarter, A3 quarter, G3 quarter; F#3 quarter, E3 quarter, D3 quarter, C3 quarter. The second staff (treble clef) contains four measures: G4 quarter, A4 quarter, B4 quarter, C5 quarter; G4 quarter, F#4 quarter, E4 quarter, D4 quarter; C4 quarter, B3 quarter, A3 quarter, G3 quarter; F#3 quarter, E3 quarter, D3 quarter, C3 quarter.

446

Exercise 446 is written in 2/4 time. The first staff (treble clef) contains four measures: G4 quarter, A4 quarter, B4 quarter, C5 quarter; G4 quarter, F#4 quarter, E4 quarter, D4 quarter; C4 quarter, B3 quarter, A3 quarter, G3 quarter; F#3 quarter, E3 quarter, D3 quarter, C3 quarter. The second staff (treble clef) contains four measures: G4 quarter, A4 quarter, B4 quarter, C5 quarter; G4 quarter, F#4 quarter, E4 quarter, D4 quarter; C4 quarter, B3 quarter, A3 quarter, G3 quarter; F#3 quarter, E3 quarter, D3 quarter, C3 quarter.

447

Exercise 447 is written in 4/4 time. The first staff (treble clef) contains four measures: G4 quarter, A4 quarter, B4 quarter, C5 quarter; G4 quarter, F#4 quarter, E4 quarter, D4 quarter; C4 quarter, B3 quarter, A3 quarter, G3 quarter; F#3 quarter, E3 quarter, D3 quarter, C3 quarter. The second staff (treble clef) contains four measures: G4 quarter, A4 quarter, B4 quarter, C5 quarter; G4 quarter, F#4 quarter, E4 quarter, D4 quarter; C4 quarter, B3 quarter, A3 quarter, G3 quarter; F#3 quarter, E3 quarter, D3 quarter, C3 quarter.

448

Exercise 448 is written in 6/8 time. The first staff (treble clef) contains four measures: G4 quarter, A4 quarter, B4 quarter, C5 quarter; G4 quarter, F#4 quarter, E4 quarter, D4 quarter; C4 quarter, B3 quarter, A3 quarter, G3 quarter; F#3 quarter, E3 quarter, D3 quarter, C3 quarter. The second staff (treble clef) contains four measures: G4 quarter, A4 quarter, B4 quarter, C5 quarter; G4 quarter, F#4 quarter, E4 quarter, D4 quarter; C4 quarter, B3 quarter, A3 quarter, G3 quarter; F#3 quarter, E3 quarter, D3 quarter, C3 quarter.

449

Musical notation for exercise 449, consisting of two staves in treble clef with a key signature of one sharp (F#) and a 4/4 time signature. The first staff contains four measures of music, including a triplet of eighth notes in the second measure. The second staff contains four measures, including a triplet of eighth notes in the third measure and a triplet of quarter notes in the fourth measure.

450

Musical notation for exercise 450, consisting of two staves in treble clef with a key signature of two flats (Bb, Eb) and a 3/4 time signature. The first staff contains four measures of music. The second staff contains four measures, including a triplet of eighth notes in the first measure and a quintuplet of eighth notes in the third measure.

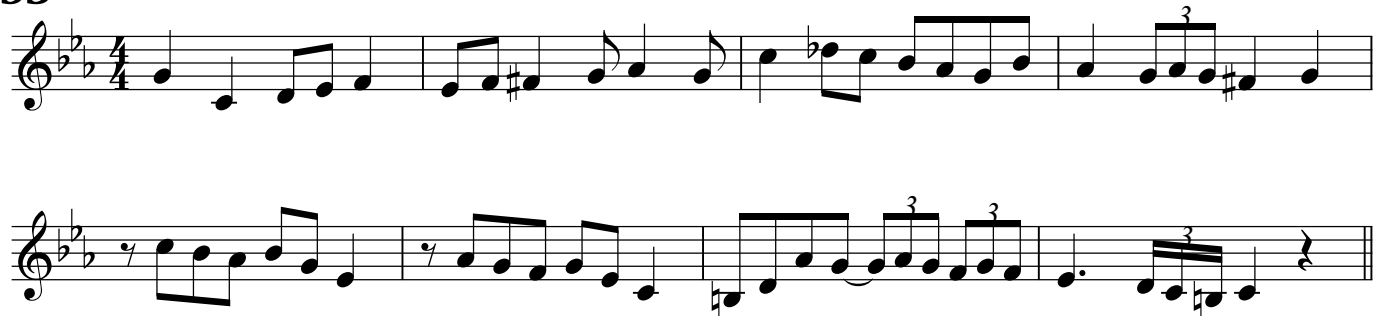
451

Musical notation for exercise 451, consisting of two staves in treble clef with a key signature of two flats (Bb, Eb) and a 2/4 time signature. The first staff contains four measures of music, including a sixteenth-note triplet in the second measure. The second staff contains four measures of music, including a sixteenth-note triplet in the first measure.

452

Musical notation for exercise 452, consisting of two staves in treble clef with a key signature of three sharps (F#, C#, G#) and a 6/8 time signature. The first staff contains four measures of music. The second staff contains four measures of music, including a sixteenth-note triplet in the first measure.

453



454



455



456



457

Exercise 457 is written in treble clef with a key signature of one sharp (F#) and a time signature of 5/4. The first staff contains four measures of music, and the second staff contains four measures. The piece concludes with a double bar line.

458

Exercise 458 is written in treble clef with a key signature of three flats (Bb, Eb, Ab) and a time signature of 9/16. The first staff contains four measures of music, and the second staff contains four measures. The piece concludes with a double bar line.

459

Exercise 459 is written in treble clef with a key signature of one sharp (F#) and a time signature of 4/4. The first staff contains four measures of music, and the second staff contains four measures. The piece concludes with a double bar line.

460

Exercise 460 is written in treble clef with a key signature of two flats (Bb, Eb) and a time signature of 3/4. The first staff contains four measures of music, and the second staff contains four measures. The piece concludes with a double bar line.

461

Exercise 461 is written in 6/8 time with a key signature of one flat (B-flat). The first staff contains a melodic line with eighth and sixteenth notes, including a triplet of eighth notes. The second staff provides a harmonic accompaniment with chords and moving lines.

462

Exercise 462 is written in 6/8 time with a key signature of two sharps (F# and C#). The first staff features a melodic line with eighth and sixteenth notes. The second staff provides a harmonic accompaniment with chords and moving lines.

463

Exercise 463 is written in 4/4 time with a key signature of one sharp (F#). The first staff contains a melodic line with eighth and sixteenth notes, including a triplet of eighth notes. The second staff provides a harmonic accompaniment with chords and moving lines.

464

Exercise 464 is written in 4/4 time with a key signature of one flat (B-flat). The first staff contains a melodic line with eighth and sixteenth notes. The second staff provides a harmonic accompaniment with chords and moving lines, including a triplet of eighth notes.

465

Musical notation for exercise 465, consisting of two staves in 4/4 time. The first staff contains a sequence of eighth and quarter notes. The second staff contains a sequence of eighth and quarter notes, including a triplet of eighth notes marked with a '3' above them.

466

Musical notation for exercise 466, consisting of two staves in 6/8 time. The first staff contains a sequence of eighth and quarter notes. The second staff contains a sequence of eighth and quarter notes, including a triplet of eighth notes marked with a '3' above them.

467

Musical notation for exercise 467, consisting of two staves in 3/4 time. The first staff contains a sequence of eighth and quarter notes. The second staff contains a sequence of eighth and quarter notes, including a triplet of eighth notes marked with a '3' above them.

468

Musical notation for exercise 468, consisting of two staves in 4/4 time. The first staff contains a sequence of eighth and quarter notes. The second staff contains a sequence of eighth and quarter notes, including a triplet of eighth notes marked with a '3' above them.

469

Exercise 469 is written in 3/4 time with a key signature of one flat (B-flat). The first staff contains six measures of music, primarily consisting of eighth and quarter notes. The second staff continues the melody, featuring a triplet of eighth notes in the second measure and another triplet of eighth notes in the fifth measure. The piece concludes with a double bar line.

470

Exercise 470 is written in 5/8 time with a key signature of two sharps (F# and C#). The first staff contains six measures of music, featuring a mix of eighth and quarter notes. The second staff continues the melody, including a triplet of eighth notes in the fifth measure. The piece concludes with a double bar line.

471

Exercise 471 is written in 4/4 time with a key signature of one flat (B-flat). The first staff contains six measures of music, primarily consisting of eighth and quarter notes. The second staff continues the melody, featuring a triplet of eighth notes in the second measure and a quarter rest in the third measure. The piece concludes with a double bar line.

472

Exercise 472 is written in 3/4 time with a key signature of one flat (B-flat). The first staff contains six measures of music, primarily consisting of eighth and quarter notes. The second staff continues the melody, featuring a triplet of eighth notes in the first measure. The piece concludes with a double bar line.

473

Musical notation for exercise 473, consisting of two staves in treble clef with a key signature of three sharps (F#, C#, G#) and a 6/8 time signature. The first staff contains six measures of music, including a triplet of eighth notes in the second measure. The second staff contains six measures of music, including a triplet of eighth notes in the second measure.

474

Musical notation for exercise 474, consisting of two staves in treble clef with a key signature of one flat (Bb) and a 6/8 time signature. The first staff contains six measures of music. The second staff contains six measures of music.

475

Musical notation for exercise 475, consisting of two staves in treble clef with a key signature of one flat (Bb) and a 4/4 time signature. The first staff contains four measures of music. The second staff contains four measures of music, including a triplet of eighth notes in the third measure.

476

Musical notation for exercise 476, consisting of two staves in treble clef with a key signature of one flat (Bb) and a 3/4 time signature. The first staff contains four measures of music, including a triplet of eighth notes in the third measure. The second staff contains four measures of music, including a triplet of eighth notes in the third measure.

477

Exercise 477 is written in 4/4 time with a key signature of one sharp (F#). The first staff contains a melody of eighth and quarter notes. The second staff provides a harmonic accompaniment with eighth and quarter notes, including some chromatic movement.

478

Exercise 478 is written in 6/8 time with a key signature of one sharp (F#). The first staff features a melody with dotted rhythms and eighth notes. The second staff provides a rhythmic accompaniment with eighth and sixteenth notes.

479

Exercise 479 is written in 6/8 time with a key signature of two flats (Bb, Eb). The first staff contains a melody with eighth and quarter notes. The second staff provides a rhythmic accompaniment with eighth and sixteenth notes, including triplet markings.

480

Exercise 480 is written in 3/8 time with a key signature of one sharp (F#). The first staff contains a melody of eighth and quarter notes. The second staff provides a rhythmic accompaniment with eighth and sixteenth notes.

481

Musical notation for exercise 481, consisting of two staves in 12/8 time. The key signature has one flat (B-flat). The first staff contains four measures of music, and the second staff contains four measures. The notation includes eighth and sixteenth notes, rests, and a repeat sign at the end of the second staff.

482

Musical notation for exercise 482, consisting of two staves in 4/4 time. The key signature has one sharp (F#). The first staff contains four measures of music, and the second staff contains four measures. The notation includes eighth and sixteenth notes, rests, and a triplet in the final measure of the second staff.

483

Musical notation for exercise 483, consisting of two staves in 6/8 time. The key signature has one sharp (F#). The first staff contains four measures of music, and the second staff contains four measures. The notation includes eighth and sixteenth notes, rests, and a repeat sign at the end of the second staff.

484

Musical notation for exercise 484, consisting of two staves in 4/4 time. The key signature has one flat (B-flat). The first staff contains four measures of music, and the second staff contains four measures. The notation includes eighth and sixteenth notes, rests, and a triplet in the final measure of the second staff.

485

Exercise 485 consists of two staves of music in 2/4 time. The first staff contains four measures of music, featuring eighth and sixteenth notes with various accidentals. The second staff continues the piece, also in four measures, including a triplet of eighth notes in the final measure.

486

Exercise 486 consists of two staves of music in 6/8 time. The first staff contains four measures of music, primarily using eighth and sixteenth notes. The second staff continues the piece in four measures, featuring more complex rhythmic patterns and ending with a fermata.

487

Exercise 487 consists of two staves of music in 6/8 time. The first staff contains four measures of music with a mix of eighth and sixteenth notes. The second staff continues the piece in four measures, ending with a fermata.

488

Exercise 488 consists of two staves of music in 6/8 time. The first staff contains four measures of music, including a triplet of eighth notes. The second staff continues the piece in four measures, ending with a fermata.

489

Exercise 489 is written in 4/4 time. The first staff begins with a treble clef and a key signature of one sharp (F#). The melody consists of eighth and quarter notes. The second staff continues the melody, featuring a key signature change to two sharps (F# and C#) in the second measure.

490

Exercise 490 is written in 3/4 time. The first staff begins with a bass clef and a key signature of one sharp (F#). The melody consists of quarter and eighth notes. The second staff continues the melody, featuring a key signature change to two sharps (F# and C#) in the second measure and includes a triplet of eighth notes in the third measure.

491

Exercise 491 is written in 6/8 time. The first staff begins with a bass clef and a key signature of one sharp (F#). The melody consists of eighth and sixteenth notes. The second staff continues the melody, featuring a key signature change to two sharps (F# and C#) in the second measure and includes a triplet of eighth notes in the third measure.

492

Exercise 492 is written in 4/4 time. The first staff begins with a treble clef and a key signature of one sharp (F#). The melody consists of eighth and sixteenth notes. The second staff continues the melody, featuring a key signature change to two sharps (F# and C#) in the second measure and includes two triplet markings over eighth notes in the third and fourth measures.

493

Exercise 493 consists of two staves of music in G major (one sharp) and 4/4 time. The first staff contains four measures: the first measure has a quarter note G, a quarter note A, and a quarter note B; the second measure has a quarter note C, a quarter note D, and a quarter note E; the third measure has a quarter note F#, a quarter note G, and a quarter note A; the fourth measure has a quarter note B, a quarter note C, and a quarter note D. The second staff contains four measures: the first measure has a quarter note E, a quarter note F#, and a quarter note G; the second measure has a quarter note A, a quarter note B, and a quarter note C; the third measure has a quarter note D, a quarter note E, and a quarter note F#; the fourth measure has a quarter note G, a quarter note A, and a quarter note B. Both staves end with a double bar line. There are triplets of eighth notes in the second measure of each staff.

494

Exercise 494 consists of two staves of music in G minor (two flats) and 6/8 time. The first staff contains four measures: the first measure has a quarter note G, a quarter note A, and a quarter note B; the second measure has a quarter note C, a quarter note D, and a quarter note E; the third measure has a quarter note F, a quarter note G, and a quarter note A; the fourth measure has a quarter note B, a quarter note C, and a quarter note D. The second staff contains four measures: the first measure has a quarter note E, a quarter note F, and a quarter note G; the second measure has a quarter note A, a quarter note B, and a quarter note C; the third measure has a quarter note D, a quarter note E, and a quarter note F; the fourth measure has a quarter note G, a quarter note A, and a quarter note B. Both staves end with a double bar line.

495

Exercise 495 consists of two staves of music in G minor (two flats) and 12/8 time. The first staff contains four measures: the first measure has a quarter note G, a quarter note A, and a quarter note B; the second measure has a quarter note C, a quarter note D, and a quarter note E; the third measure has a quarter note F, a quarter note G, and a quarter note A; the fourth measure has a quarter note B, a quarter note C, and a quarter note D. The second staff contains four measures: the first measure has a quarter note E, a quarter note F, and a quarter note G; the second measure has a quarter note A, a quarter note B, and a quarter note C; the third measure has a quarter note D, a quarter note E, and a quarter note F; the fourth measure has a quarter note G, a quarter note A, and a quarter note B. Both staves end with a double bar line.

496

Exercise 496 consists of two staves of music in G minor (two flats) and 3/4 time. The first staff contains four measures: the first measure has a quarter note G, a quarter note A, and a quarter note B; the second measure has a quarter note C, a quarter note D, and a quarter note E; the third measure has a quarter note F, a quarter note G, and a quarter note A; the fourth measure has a quarter note B, a quarter note C, and a quarter note D. The second staff contains four measures: the first measure has a quarter note E, a quarter note F, and a quarter note G; the second measure has a quarter note A, a quarter note B, and a quarter note C; the third measure has a quarter note D, a quarter note E, and a quarter note F; the fourth measure has a quarter note G, a quarter note A, and a quarter note B. Both staves end with a double bar line. There are triplets of eighth notes in the first measure of each staff.

497

Musical notation for exercise 497, consisting of two staves in 4/4 time. The first staff has a treble clef and a key signature of one sharp (F#). The second staff has a treble clef and a key signature of one sharp (F#). The piece features eighth and sixteenth notes, with a triplet of eighth notes in the final measure of the first staff.

498

Musical notation for exercise 498, consisting of two staves in 6/8 time. The first staff has a treble clef and a key signature of two flats (Bb, Eb). The second staff has a bass clef and a key signature of two flats (Bb, Eb). The piece features eighth and sixteenth notes, with a triplet of eighth notes in the final measure of the second staff.

499

Musical notation for exercise 499, consisting of two staves in 3/4 time. The first staff has a treble clef and a key signature of one sharp (F#). The second staff has a treble clef and a key signature of one sharp (F#). The piece features eighth and sixteenth notes, with triplets of eighth notes in the first and third measures of the first staff.

500

Musical notation for exercise 500, consisting of two staves in 6/8 time. The first staff has a treble clef and a key signature of two flats (Bb, Eb). The second staff has a treble clef and a key signature of two flats (Bb, Eb). The piece features eighth and sixteenth notes, with a triplet of eighth notes in the final measure of the second staff.

501

Musical notation for exercise 501, consisting of two staves in treble clef with a key signature of one sharp (F#) and a time signature of 6/8. The first staff contains four measures of music, and the second staff contains four measures, ending with a fermata over the final note.

502

Musical notation for exercise 502, consisting of two staves in treble clef with a key signature of one flat (Bb) and a time signature of 4/4. The first staff contains four measures, and the second staff contains four measures, both featuring triplet markings over the final notes of the second and fourth measures.

503

Musical notation for exercise 503, consisting of two staves in treble clef with a key signature of two flats (Bb, Eb) and a time signature of 6/8. The first staff contains four measures, and the second staff contains four measures.

504

Musical notation for exercise 504, consisting of two staves in treble clef with a key signature of three sharps (F#, C#, G#) and a time signature of 3/4. The first staff contains four measures, and the second staff contains four measures, both featuring triplet markings over the final notes of the second and fourth measures.

505

Exercise 505 consists of two staves of music in 4/4 time. The first staff contains a sequence of eighth and quarter notes. The second staff contains a sequence of eighth notes with a triplet of eighth notes in the fourth measure.

506

Exercise 506 consists of two staves of music in 3/4 time with a key signature of one sharp. The first staff contains a sequence of eighth and quarter notes with a triplet of eighth notes in the second measure. The second staff contains a sequence of eighth notes with two triplet markings over eighth notes.

507

Exercise 507 consists of two staves of music in 7/8 time with a key signature of two flats. The first staff contains a sequence of eighth and quarter notes. The second staff contains a sequence of eighth notes with a triplet of eighth notes in the fourth measure.

508

Exercise 508 consists of two staves of music in 4/4 time with a key signature of one sharp. The first staff contains a sequence of eighth and quarter notes with a triplet of eighth notes in the fourth measure. The second staff contains a sequence of eighth notes with a triplet of eighth notes in the fourth measure.

509

Musical notation for exercise 509, consisting of two staves in 3/4 time with a key signature of one flat. The first staff contains four measures of music. The second staff contains four measures, including a triplet of eighth notes in the second measure.

510

Musical notation for exercise 510, consisting of two staves in 4/4 time with a key signature of one flat. The first staff contains four measures of music. The second staff contains four measures, including a triplet of eighth notes in the third measure.

511

Musical notation for exercise 511, consisting of two staves in 4/4 time with a key signature of one sharp. The first staff contains four measures of music. The second staff contains four measures, including a triplet of eighth notes in the second measure.

512

Musical notation for exercise 512, consisting of two staves in 4/4 time with a key signature of one sharp. The first staff contains four measures of music. The second staff contains four measures, including multiple triplet markings.

513

Musical notation for exercise 513, consisting of two staves in 4/4 time. The first staff contains a melody with a triplet of eighth notes in the second measure. The second staff contains a bass line with various rhythmic patterns and accidentals.

514

Musical notation for exercise 514, consisting of two staves in 9/8 time. The first staff contains a melody with a dotted quarter note and eighth notes. The second staff contains a bass line with a mix of eighth and sixteenth notes.

515

Musical notation for exercise 515, consisting of two staves in 4/4 time. The first staff contains a melody with a triplet of eighth notes in the fourth measure. The second staff contains a bass line with eighth and sixteenth notes.

516

Musical notation for exercise 516, consisting of two staves in 6/8 time. The first staff contains a melody with eighth and sixteenth notes. The second staff contains a bass line with eighth and sixteenth notes.

517

Musical notation for exercise 517, consisting of two staves in 3/4 time with a key signature of two flats. The first staff contains a melody with two triplet markings. The second staff contains a bass line with various rhythmic patterns.

518

Musical notation for exercise 518, consisting of two staves in 4/4 time with a key signature of two flats. The first staff contains a melody with a triplet marking. The second staff contains a bass line with various rhythmic patterns.

519

Musical notation for exercise 519, consisting of two staves in 6/8 time with a key signature of two flats. The first staff contains a melody with various rhythmic patterns. The second staff contains a bass line with various rhythmic patterns.

520

Musical notation for exercise 520, consisting of two staves in 3/4 time with a key signature of three sharps. The first staff contains a melody with three triplet markings. The second staff contains a bass line with various rhythmic patterns.

521

Musical notation for exercise 521, consisting of two staves in 4/4 time. The first staff starts with a treble clef and a key signature of one flat (Bb). The second staff starts with a treble clef and a key signature of two flats (Bb, Eb). Both staves contain eighth and sixteenth notes, with a triplet of eighth notes in the final measure of the second staff.

522

Musical notation for exercise 522, consisting of two staves in 3/4 time. Both staves start with a treble clef and a key signature of three flats (Bb, Eb, Ab). The notation features eighth and sixteenth notes, with some beamed eighth notes.

523

Musical notation for exercise 523, consisting of two staves in 3/8 time. Both staves start with a treble clef and a key signature of two sharps (F#, C#). The notation is more complex, featuring eighth, sixteenth, and thirty-second notes, with several triplets indicated by the number '3' below the notes.