



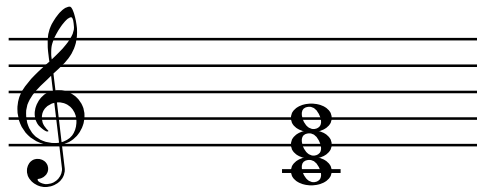
CHORD DRILL
FOR KEYBOARD

EDITED BY
YASKAWA MOCLIN

Chord Drill

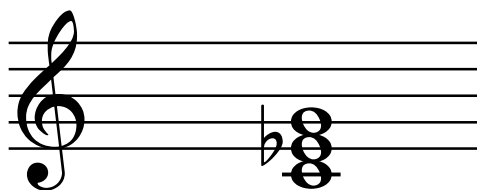
C

(長三和音 / Major)



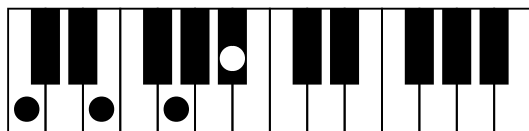
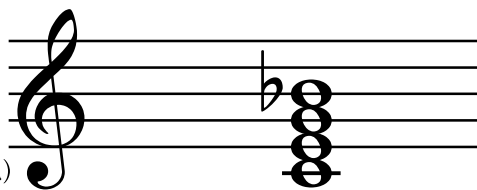
Cm

(短三和音 / Minor)



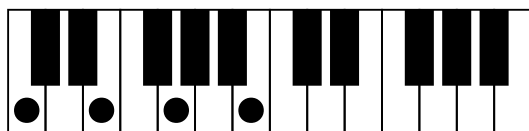
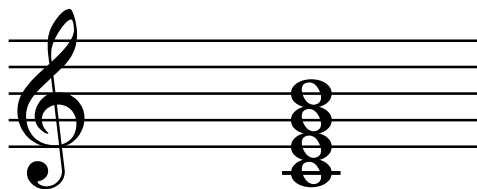
C7

(属七の和音 / Dominant 7th)



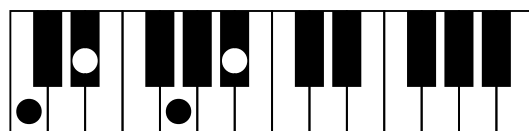
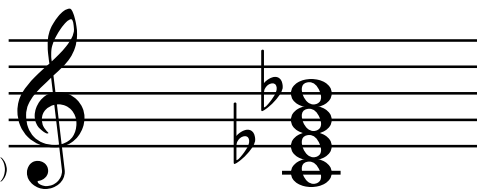
Cmaj7

(長七の和音 / Major 7th)

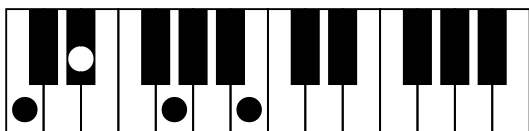
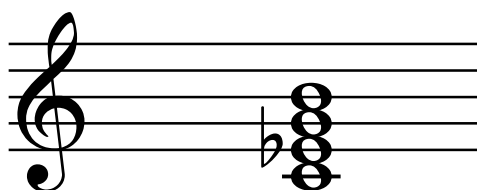


Cm7

(短七の和音 / Minor 7th)

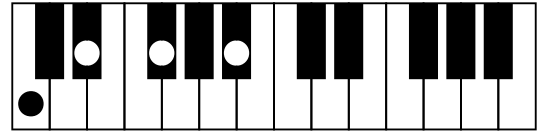
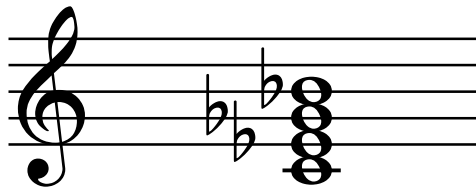


CmM7

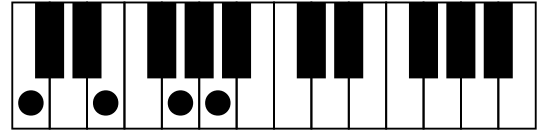
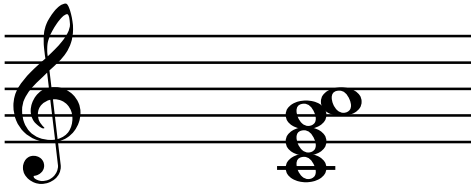


Chord Drill

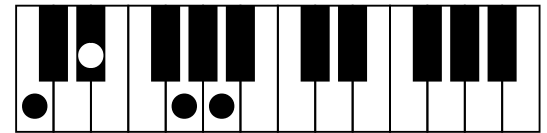
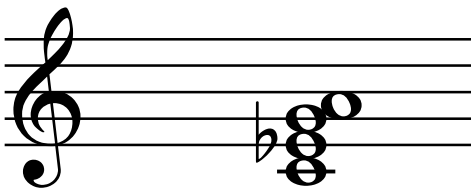
Cm^{b5}7
(Half Diminish)



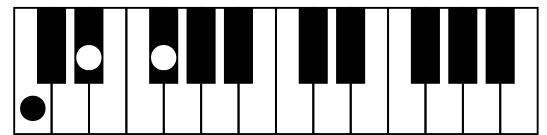
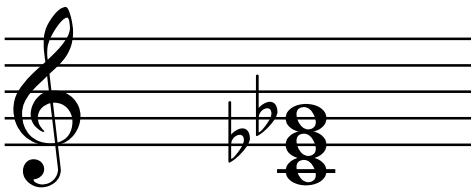
C6



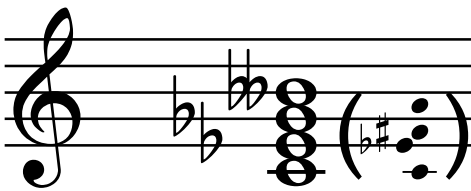
Cm6



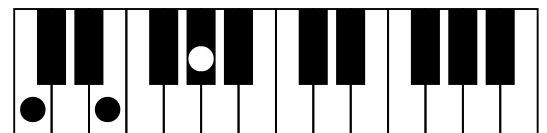
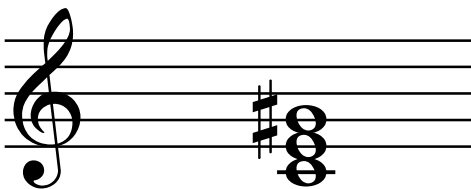
Cdim (Cm^{b5})
(減三和音 / Diminish)



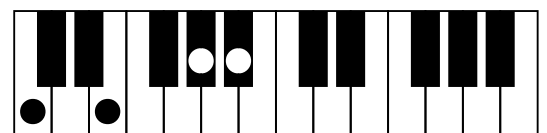
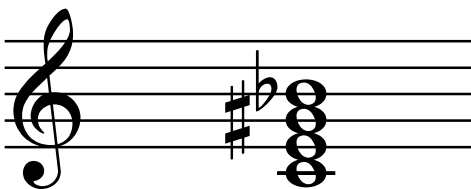
Cdim7
(減七の和音 / Diminish 7th)



Caug
(増三和音 / Augment)

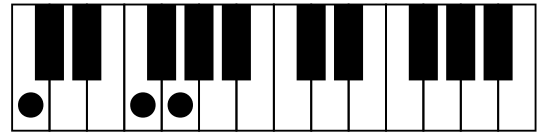


Caug7

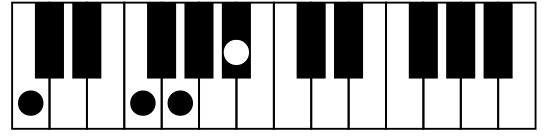


Chord Drill

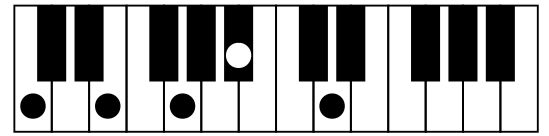
Csus4 



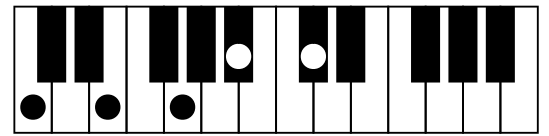
C7sus4 



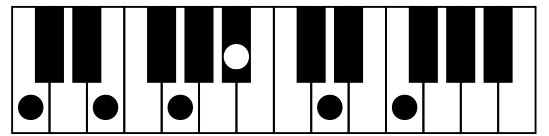
C9 



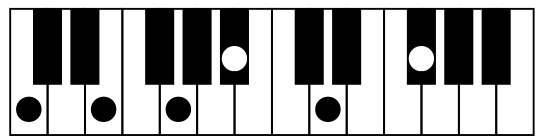
C7^b9 



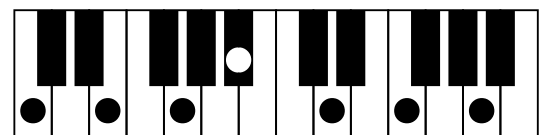
C11 



C9[#]11 

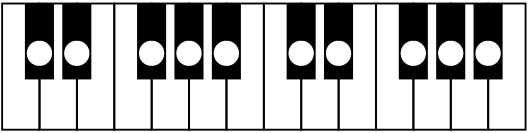



C13 



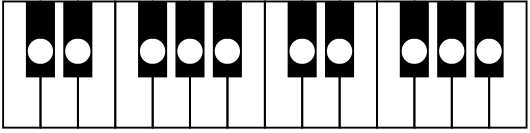
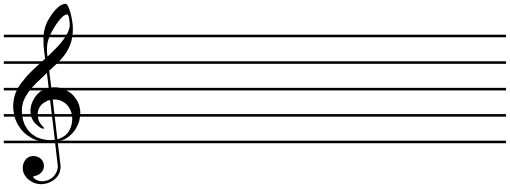
Chord Drill

F



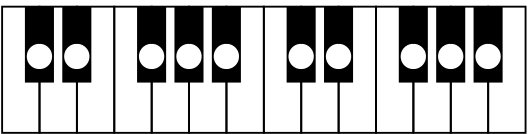
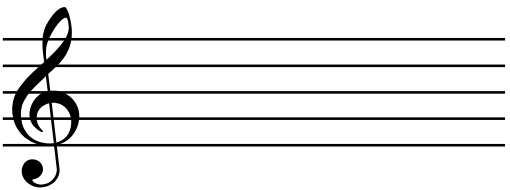
The F major chord is shown on a treble clef staff with notes F4, A4, and C5. The keyboard diagram shows white keys F4, A4, and C5 pressed.

G



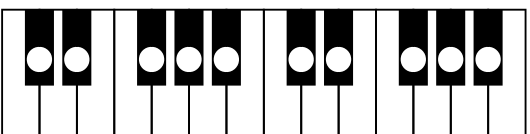
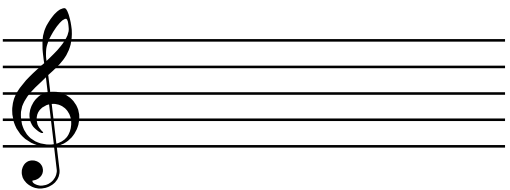
The G major chord is shown on a treble clef staff with notes G4, B4, and D5. The keyboard diagram shows white keys G4, B4, and D5 pressed.

E



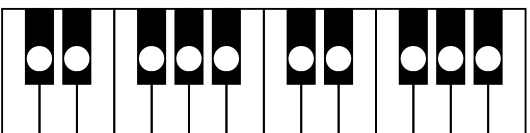
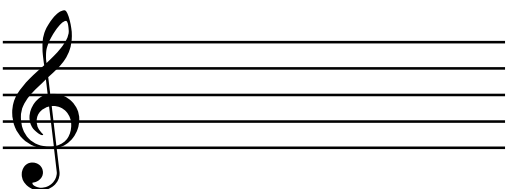
The E major chord is shown on a treble clef staff with notes E4, G#4, and B4. The keyboard diagram shows white keys E4, G#4, and B4 pressed.

B^b



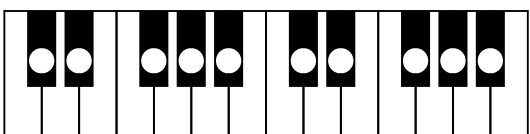
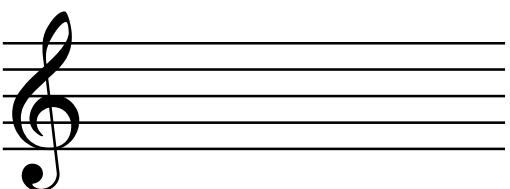
The Bb major chord is shown on a treble clef staff with notes Bb4, D5, and F5. The keyboard diagram shows white keys Bb4, D5, and F5 pressed.

D



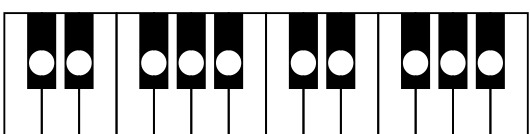
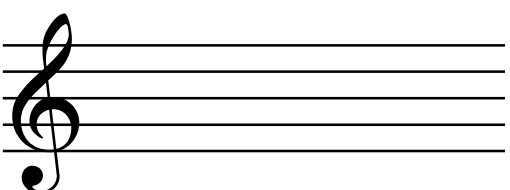
The D major chord is shown on a treble clef staff with notes D4, F#4, and A4. The keyboard diagram shows white keys D4, F#4, and A4 pressed.

F#



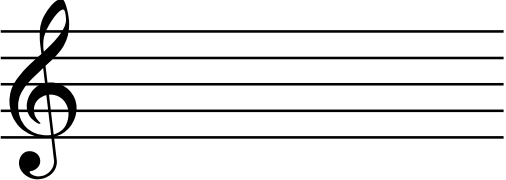
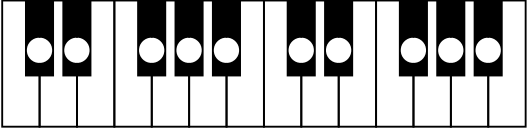
The F# major chord is shown on a treble clef staff with notes F#4, A4, and C5. The keyboard diagram shows white keys F#4, A4, and C5 pressed.

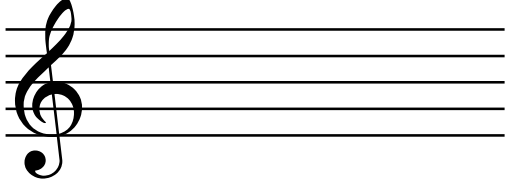
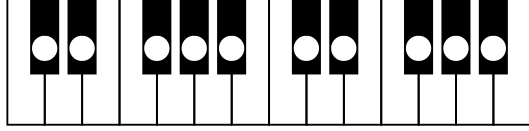
A^b

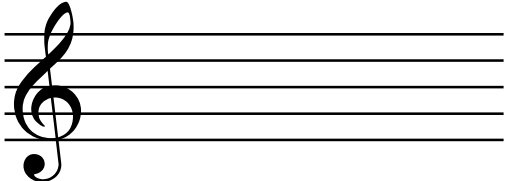
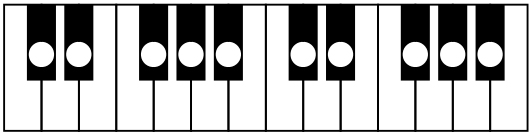


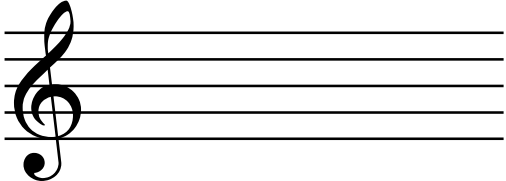
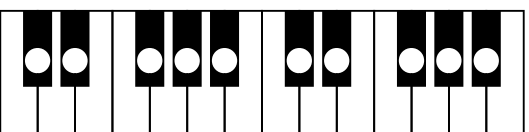
The Ab major chord is shown on a treble clef staff with notes Ab4, Bb4, and D5. The keyboard diagram shows white keys Ab4, Bb4, and D5 pressed.

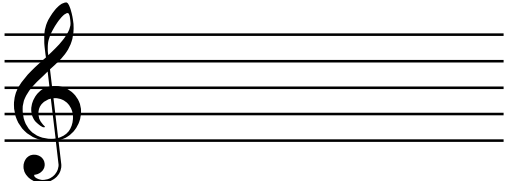
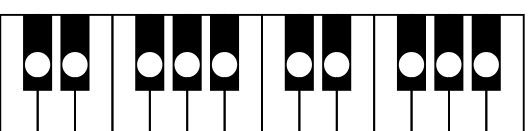
Chord Drill

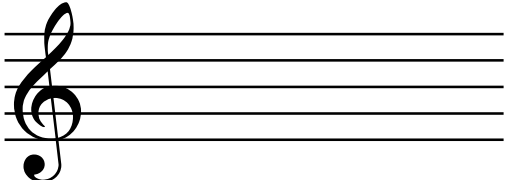
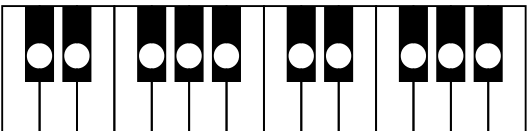
A  

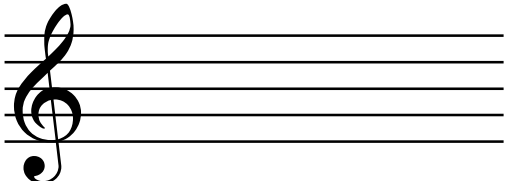
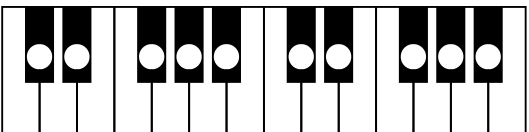
D^b  

B  

C[#]  

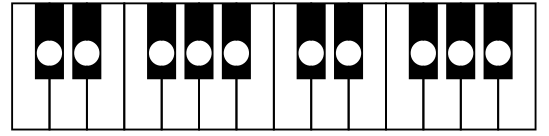
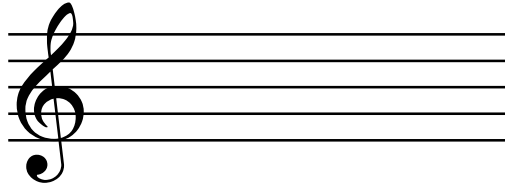
E^b  

G[#]  

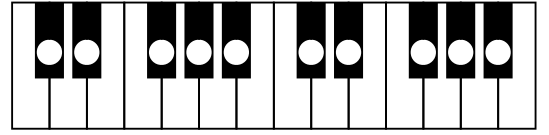
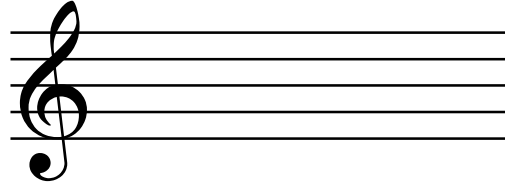
F^b  

Chord Drill

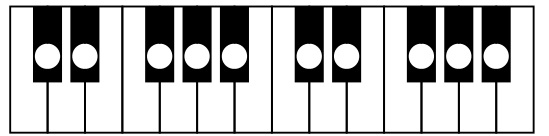
Am



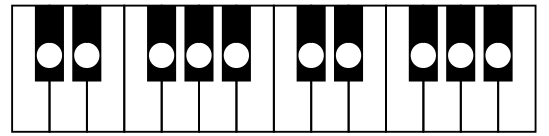
Fm



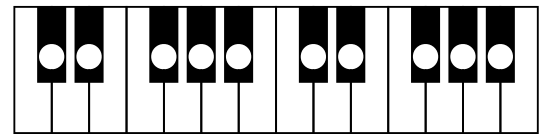
Dm



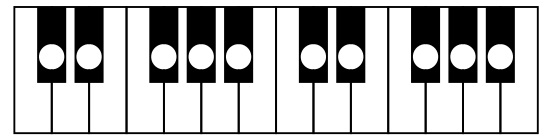
Bm



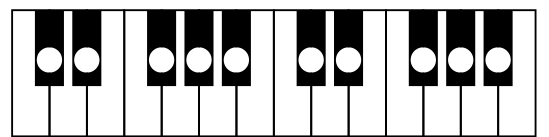
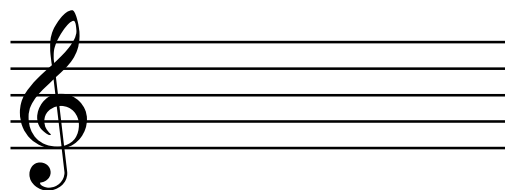
E^bm



Cm

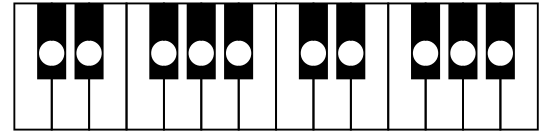
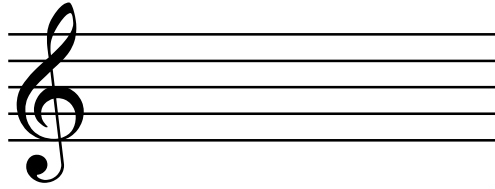


F[#]m

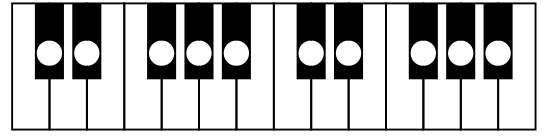
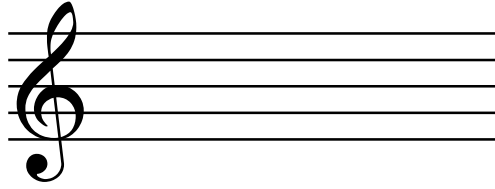


Chord Drill

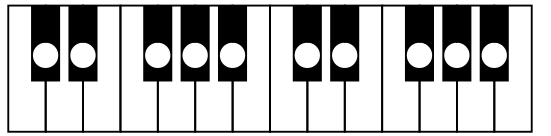
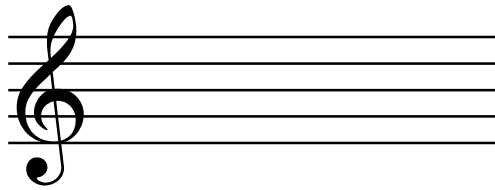
B^bm



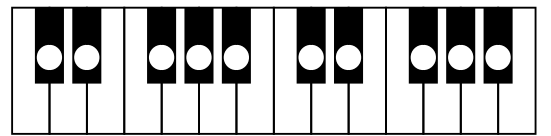
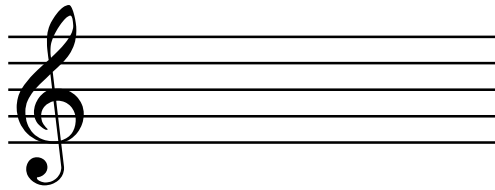
G[#]m



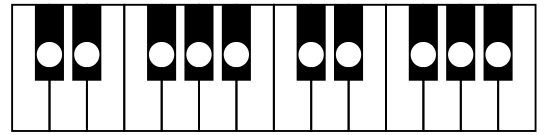
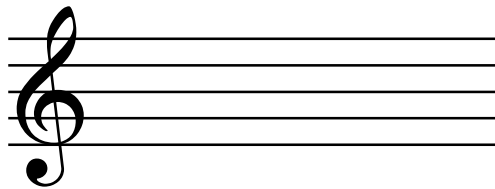
Gm



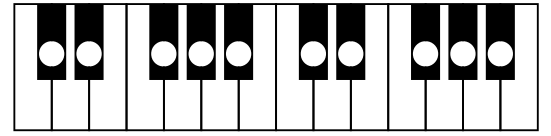
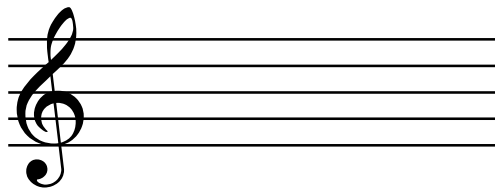
Em



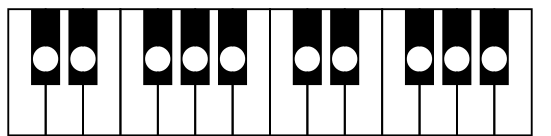
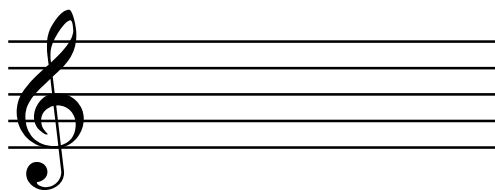
D[#]m



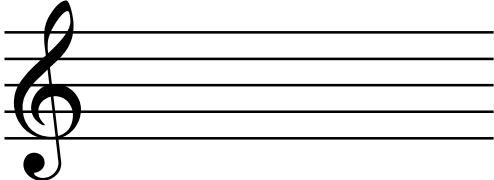
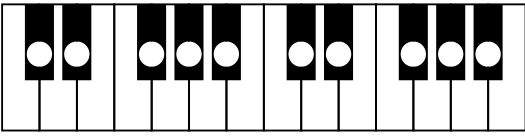
A^bm

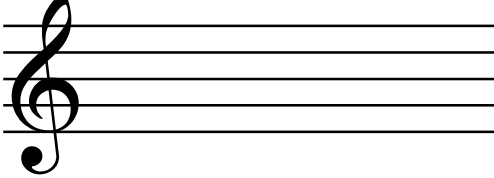
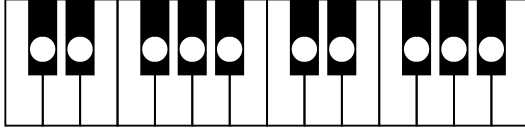


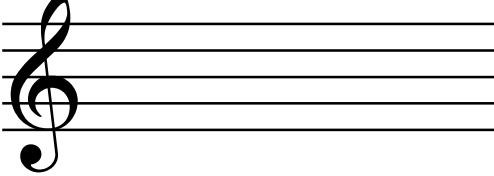
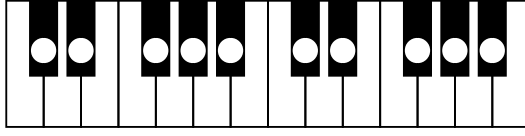
C[#]m

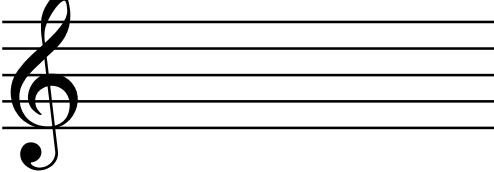
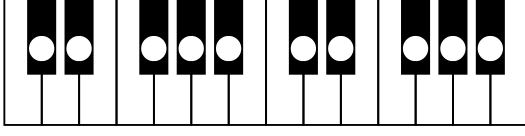


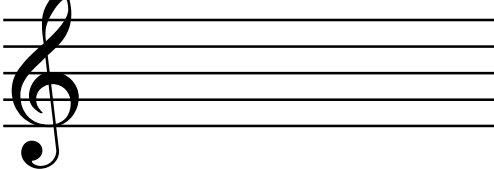
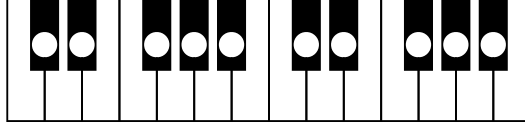
Chord Drill

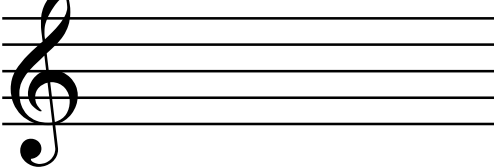
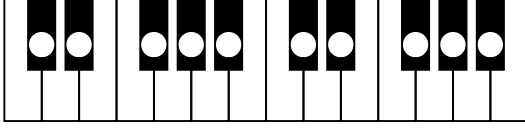
G7  

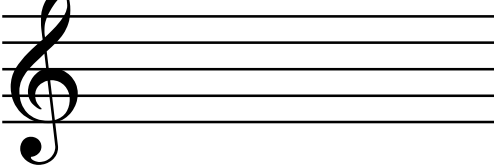
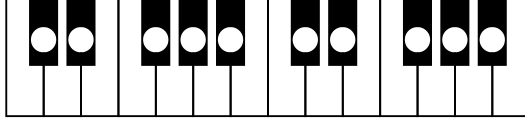
B7  

F7  

D7  

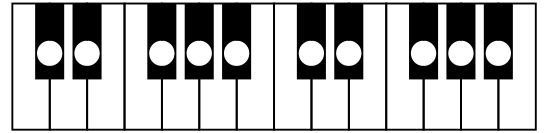
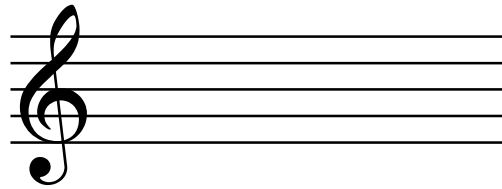
B^b7  

F[#]7  

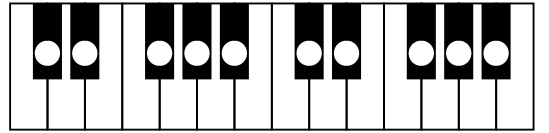
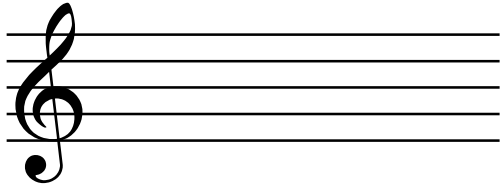
A^b7  

Chord Drill

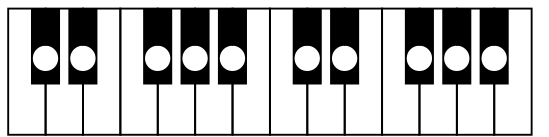
E7



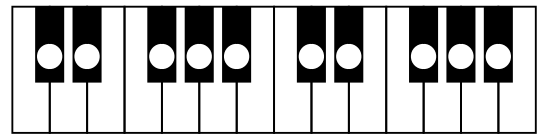
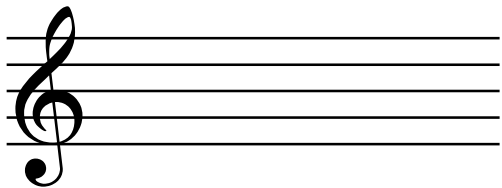
D^b7



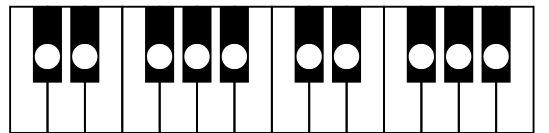
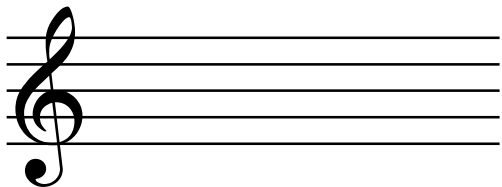
C7



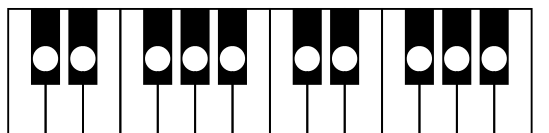
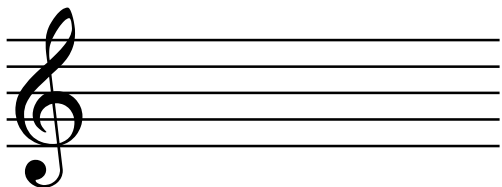
E^b7



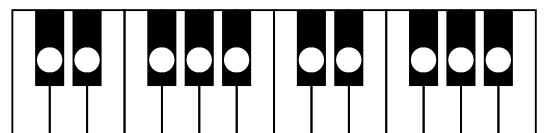
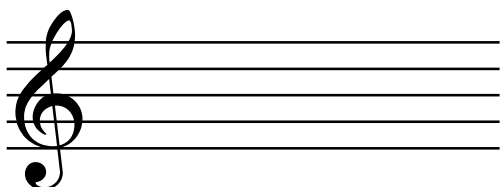
C[#]7



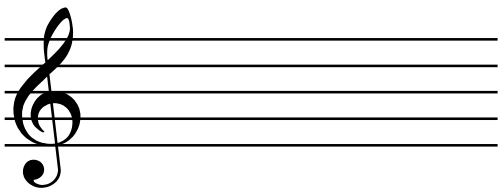
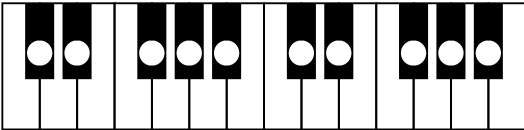
A7



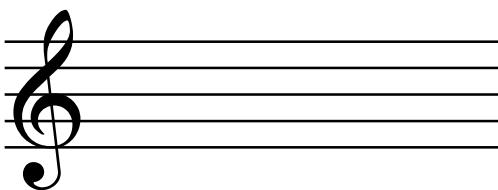
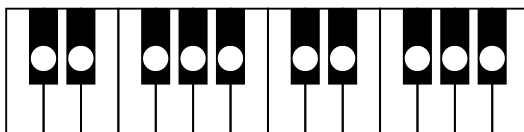
G^b7

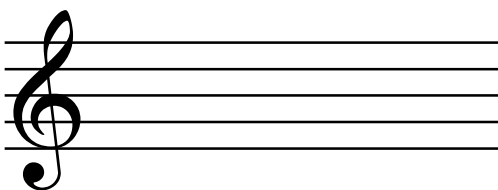
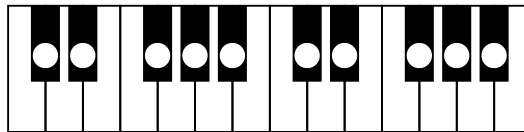


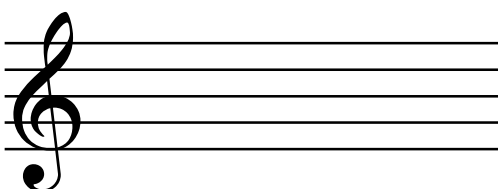
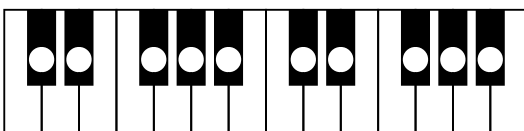
Chord Drill

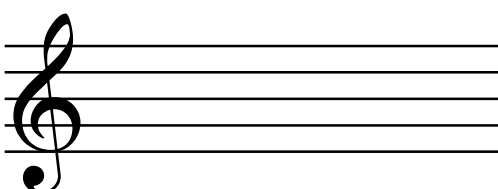
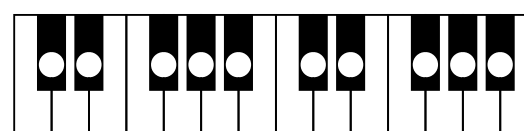
Am7  

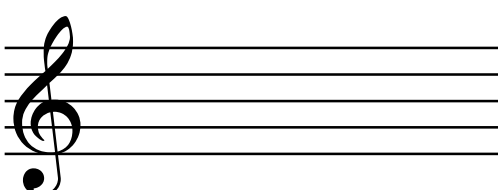
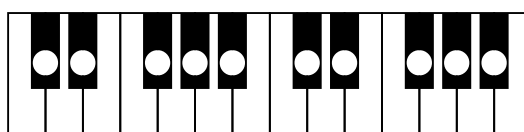
Cm7  

Bm7  

Fm7  

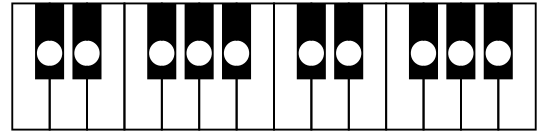
C#m7  

Bbm7  

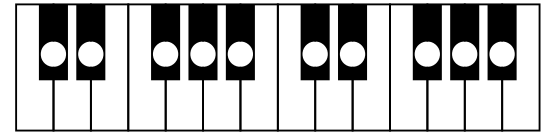
Dm7  

Chord Drill

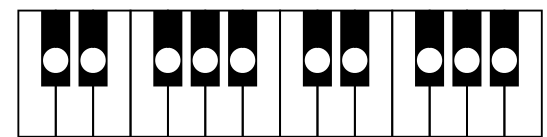
E^bm7

A musical staff in treble clef with a single whole note chord symbol.

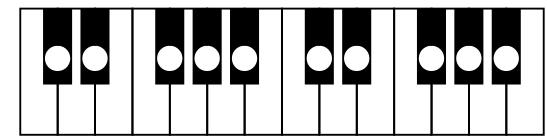
F[#]m7

A musical staff in treble clef with a single whole note chord symbol.

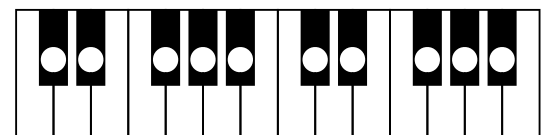
E^m7

A musical staff in treble clef with a single whole note chord symbol.

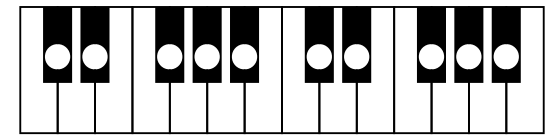
G^m7

A musical staff in treble clef with a single whole note chord symbol.

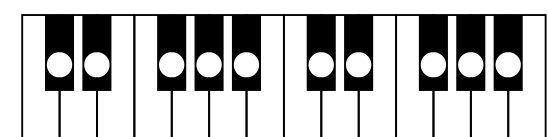
D[#]m7

A musical staff in treble clef with a single whole note chord symbol.

C^m7

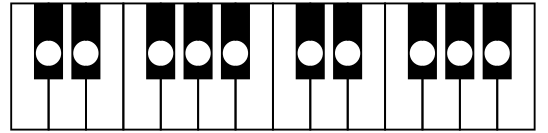
A musical staff in treble clef with a single whole note chord symbol.

G[#]m7

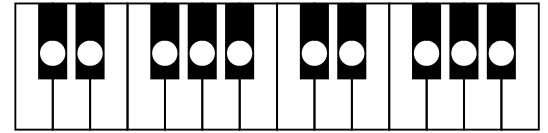
A musical staff in treble clef with a single whole note chord symbol.

Chord Drill

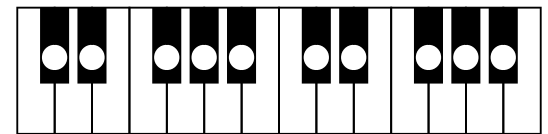
Fmaj7

A musical staff in treble clef showing the chord Fmaj7. The notes are F4, A4, C5, and E5.

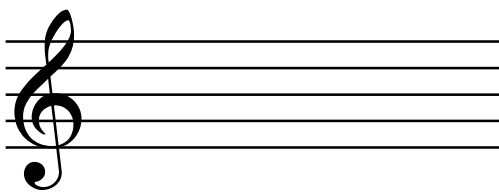
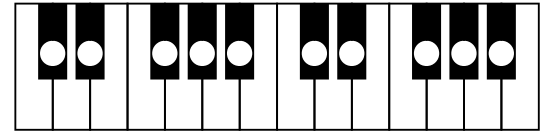
Dmaj7

A musical staff in treble clef showing the chord Dmaj7. The notes are D4, F#4, A4, and C5.

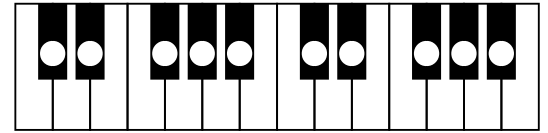
B^bmaj7

A musical staff in treble clef showing the chord B^bmaj7. The notes are B^b3, D4, F4, and A4.

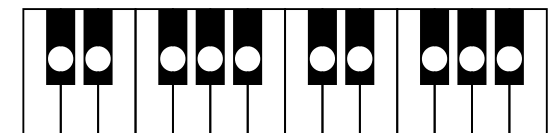
Gmaj7

A musical staff in treble clef showing the chord Gmaj7. The notes are G4, B4, D5, and F#5.

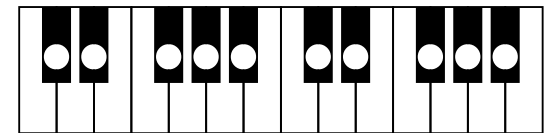
D^bmaj7

A musical staff in treble clef showing the chord D^bmaj7. The notes are D^b4, F4, A4, and C5.

F#maj7

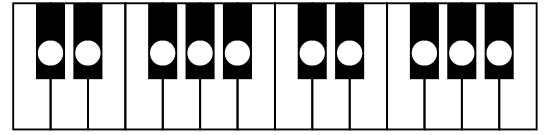
A musical staff in treble clef showing the chord F#maj7. The notes are F#4, A4, C5, and E5.

Amaj7

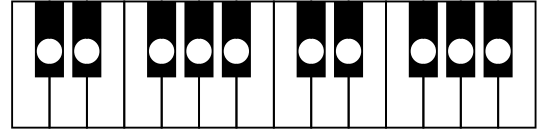
A musical staff in treble clef showing the chord Amaj7. The notes are A3, C4, E4, and G4.

Chord Drill

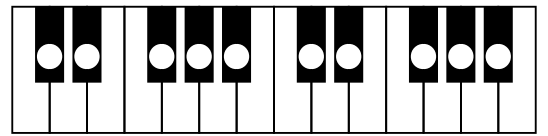
E^b maj7 



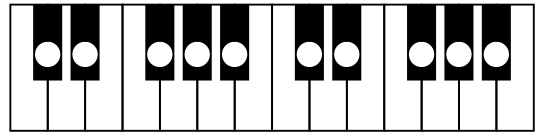
B maj7 



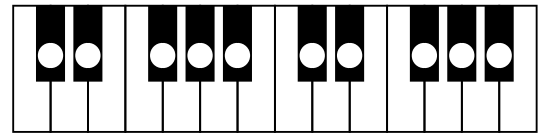
A^b maj7 



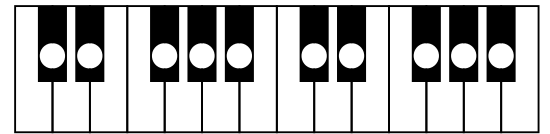
E maj7 



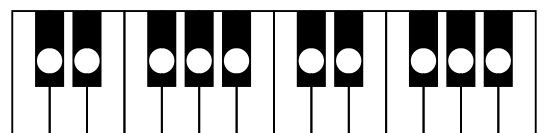
C maj7 



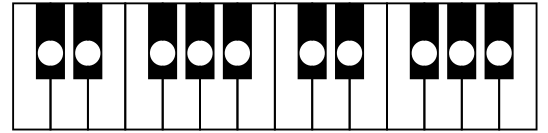
G^b maj7 



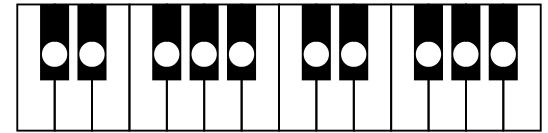
C[#] maj7 



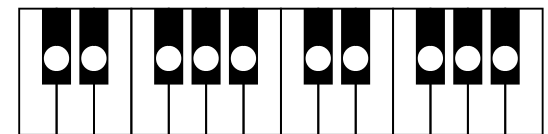
B dim 7 



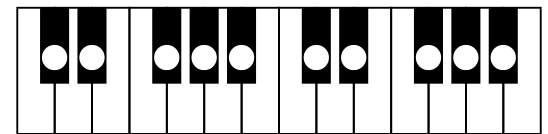
D# dim 7 



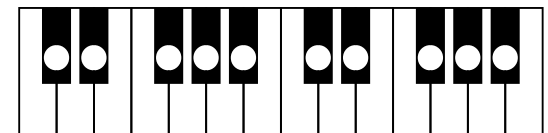
A dim 7 



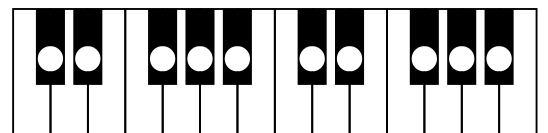
C# dim 7 



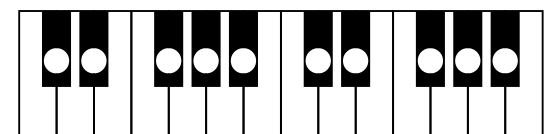
F dim 7 



Bb dim 7 

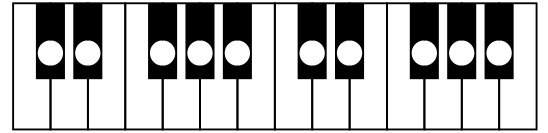
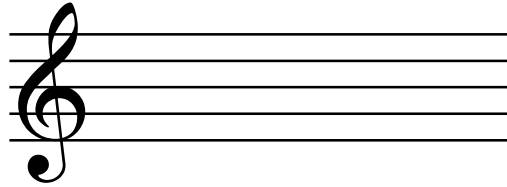


F# dim 7 

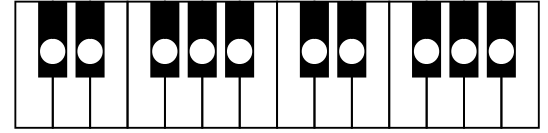
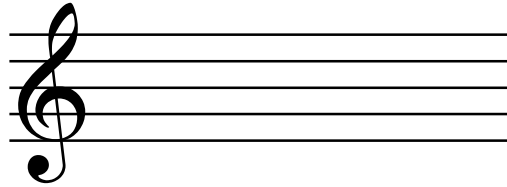


Chord Drill

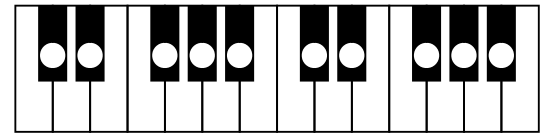
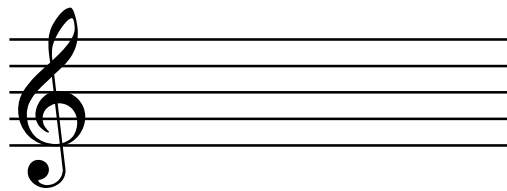
D^baug



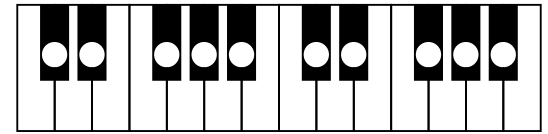
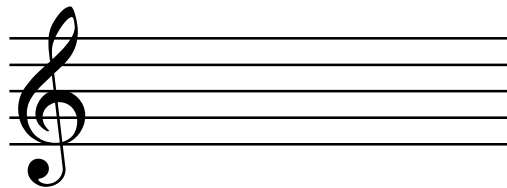
Eaug



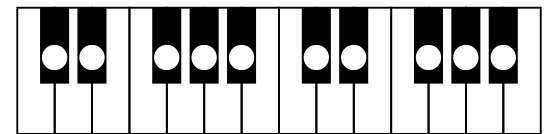
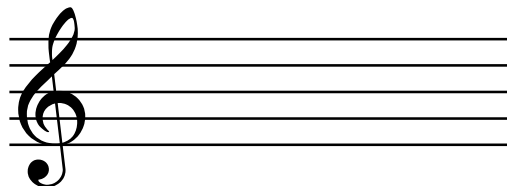
Gaug



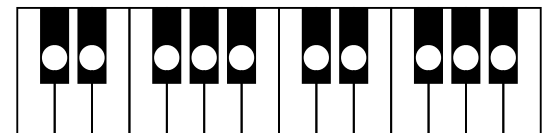
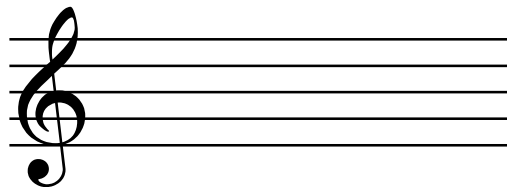
Baug



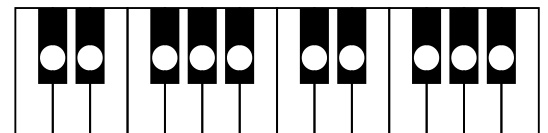
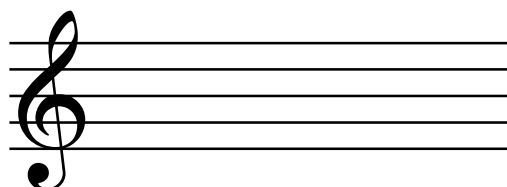
Daug



Faug

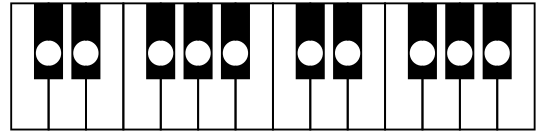
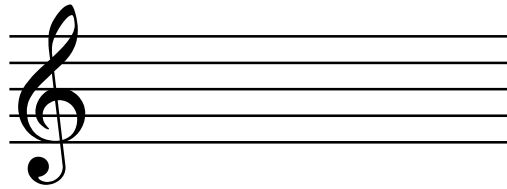


A^baug

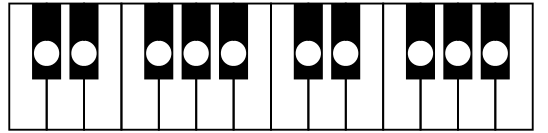
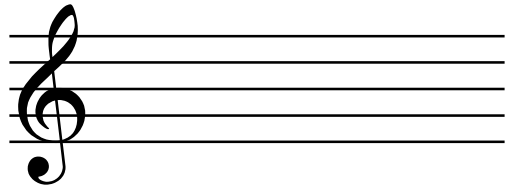


Chord Drill

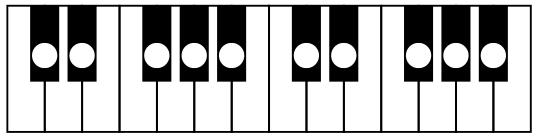
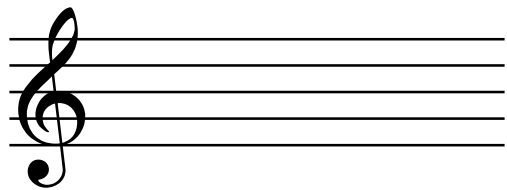
B^b6



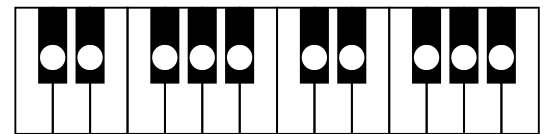
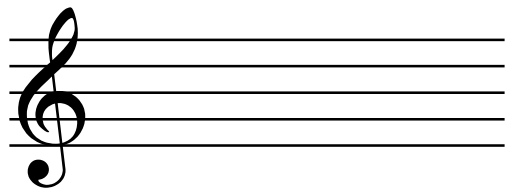
D6



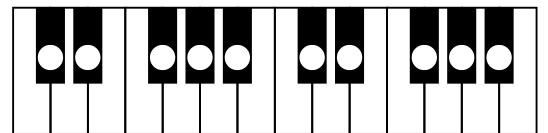
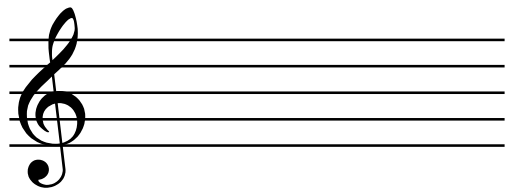
F[#]6



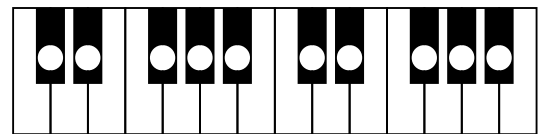
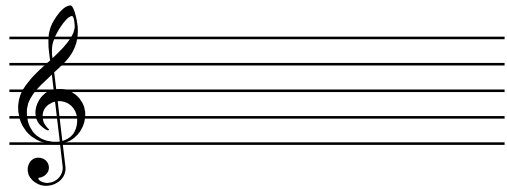
E^b6



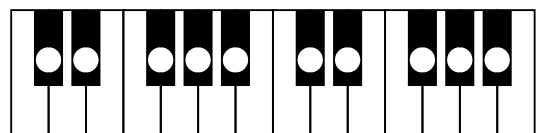
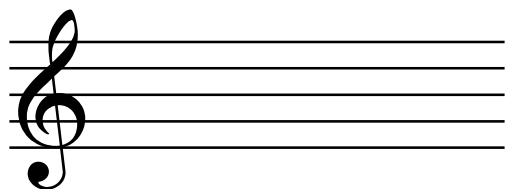
C6



A6

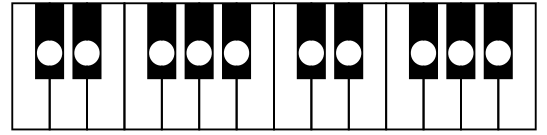
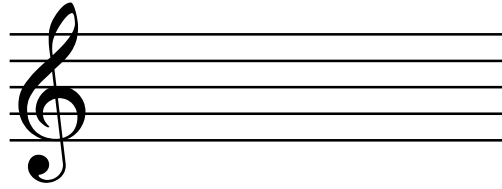


D^b6

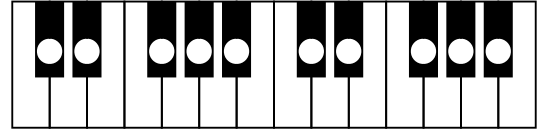
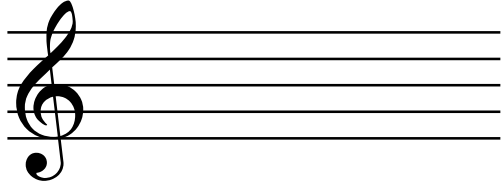


Chord Drill

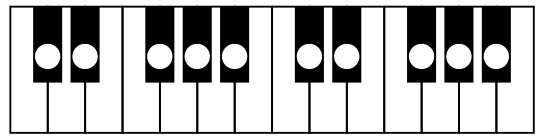
G#6



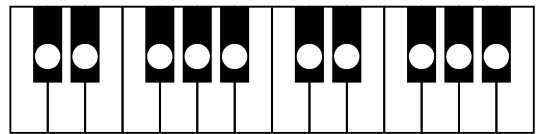
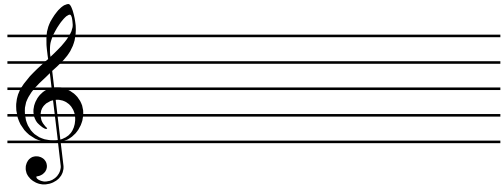
E6



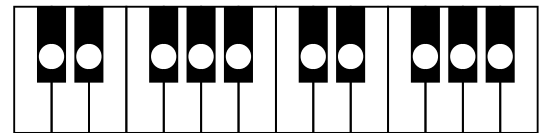
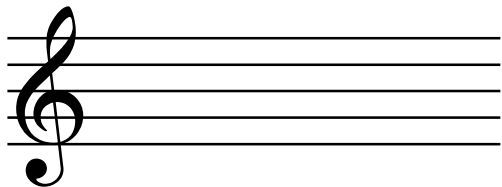
G6



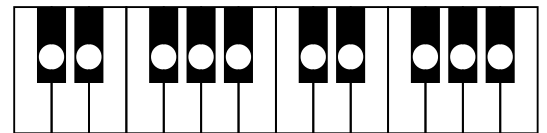
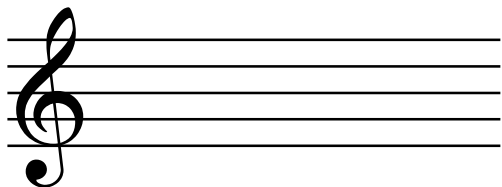
B6



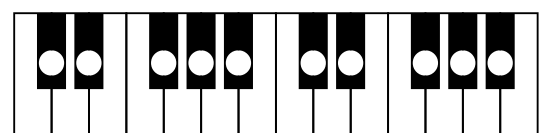
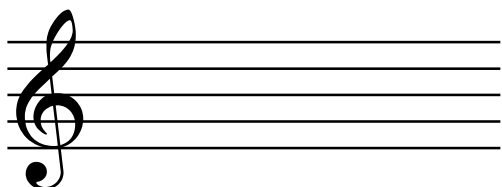
A^b6



C#6



F6

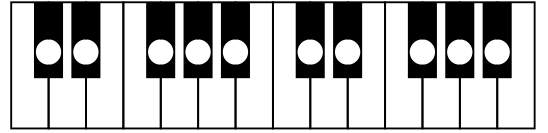


Chord Drill

A[♭]m6



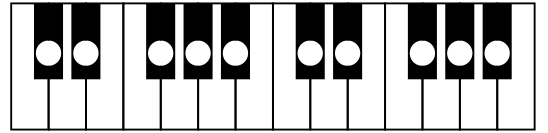
A musical staff in treble clef with a flat sign on the first line (F) and a natural sign on the second line (C). The notes are F, C, G, and A♭.



E[♭]m6



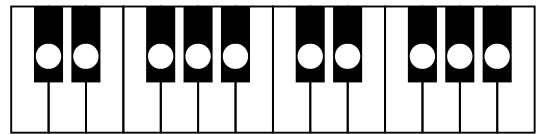
A musical staff in treble clef with a flat sign on the first space (B) and a natural sign on the second space (D). The notes are B♭, D, A, and E.



Bm6



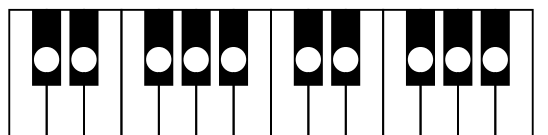
A musical staff in treble clef with a natural sign on the second space (D) and a natural sign on the third space (F). The notes are D, F, C, and B.



Gm6



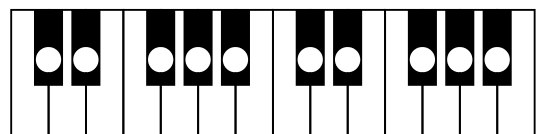
A musical staff in treble clef with a natural sign on the second space (D) and a natural sign on the third space (F). The notes are D, F, C, and G.



C[♯]m6



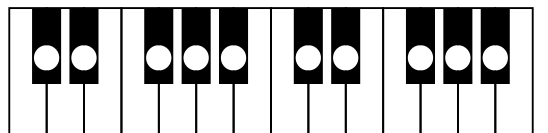
A musical staff in treble clef with a sharp sign on the second space (D) and a natural sign on the third space (F). The notes are D♯, F, C, and C♯.



Fm6



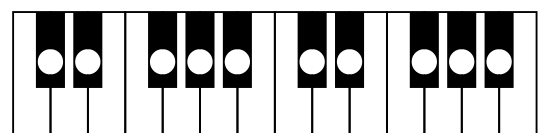
A musical staff in treble clef with a natural sign on the second space (D) and a natural sign on the third space (F). The notes are D, F, C, and F.



G[♯]m6



A musical staff in treble clef with a sharp sign on the second space (D) and a natural sign on the third space (F). The notes are D♯, F, C, and G♯.

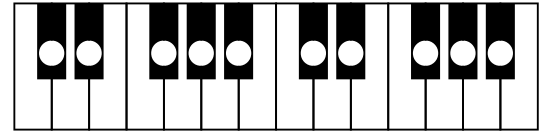


Chord Drill

E^m6



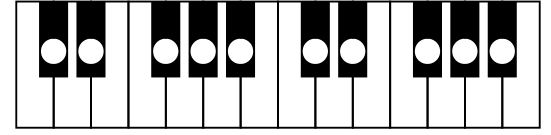
A musical staff in treble clef with a treble clef symbol on the left. The staff is empty, intended for the notation of the E minor 6 chord.



F[#]m6



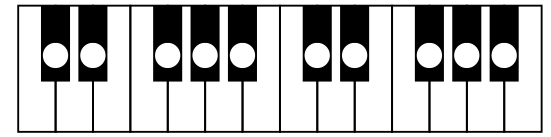
A musical staff in treble clef with a treble clef symbol on the left. The staff is empty, intended for the notation of the F# minor 6 chord.



A^bm6



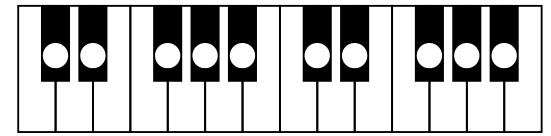
A musical staff in treble clef with a treble clef symbol on the left. The staff is empty, intended for the notation of the Ab minor 6 chord.



D[#]m6



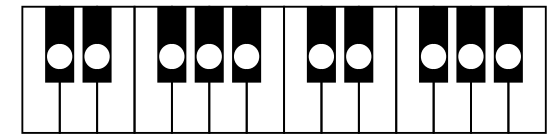
A musical staff in treble clef with a treble clef symbol on the left. The staff is empty, intended for the notation of the D# minor 6 chord.



B^bm6



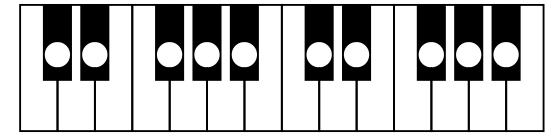
A musical staff in treble clef with a treble clef symbol on the left. The staff is empty, intended for the notation of the Bb minor 6 chord.



Dm6



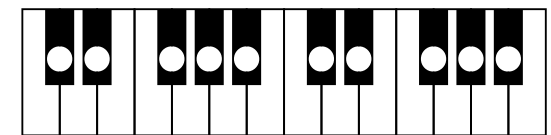
A musical staff in treble clef with a treble clef symbol on the left. The staff is empty, intended for the notation of the D minor 6 chord.



Cm6

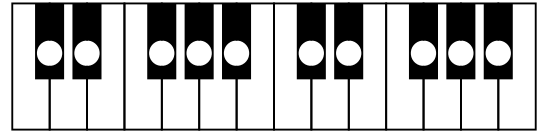
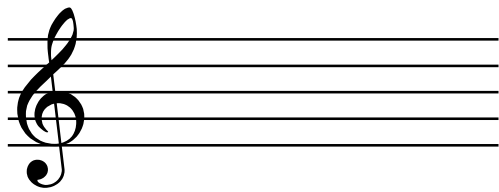


A musical staff in treble clef with a treble clef symbol on the left. The staff is empty, intended for the notation of the C minor 6 chord.

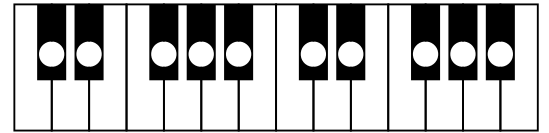
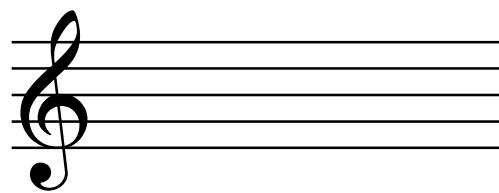


Chord Drill

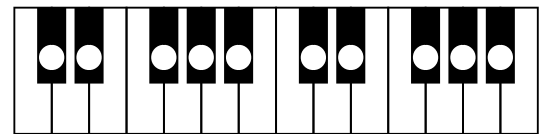
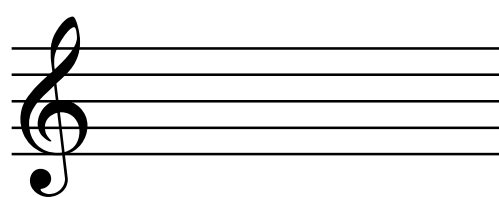
Bm^{b5}7



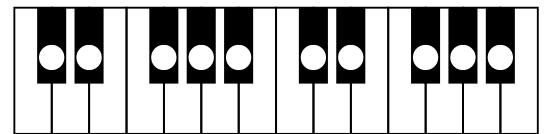
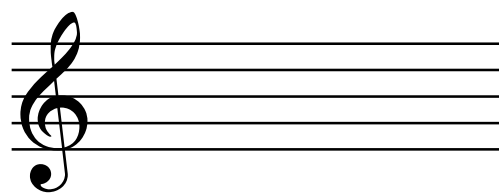
Dm^{b5}7



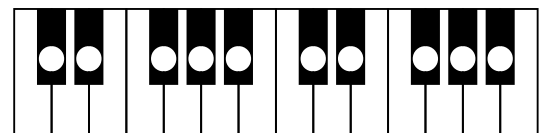
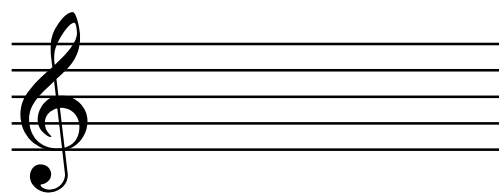
G#m^{b5}7



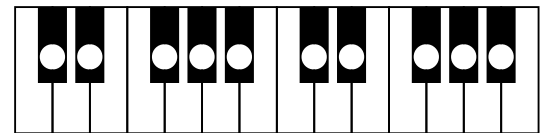
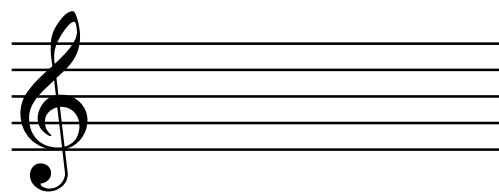
Em^{b5}7



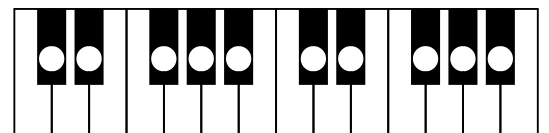
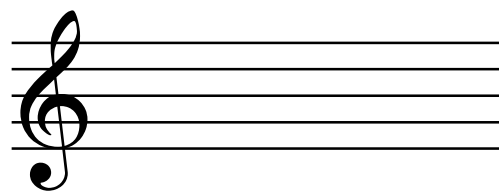
C#m^{b5}7



Fm^{b5}7

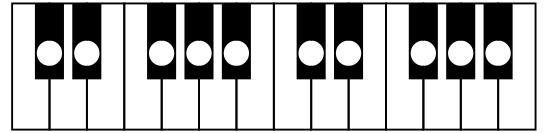
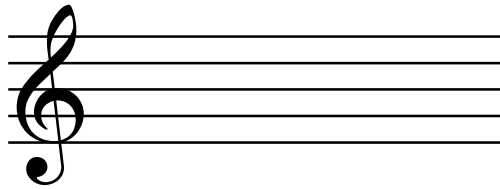


Cm^{b5}7

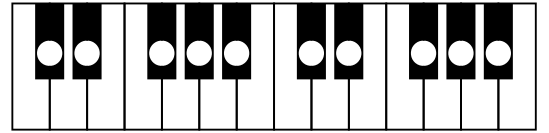
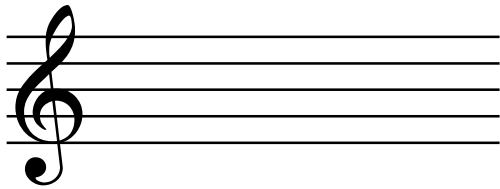


Chord Drill

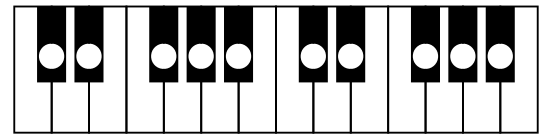
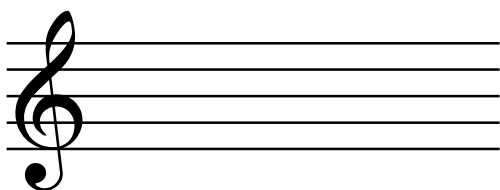
D[#]m7^{b5}



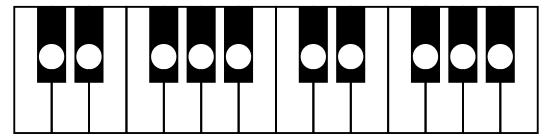
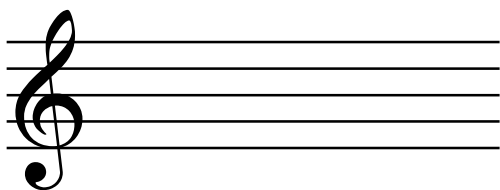
Gm7^{b5}



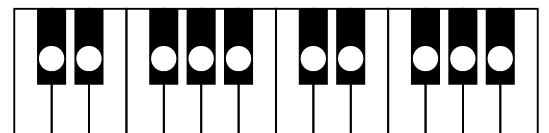
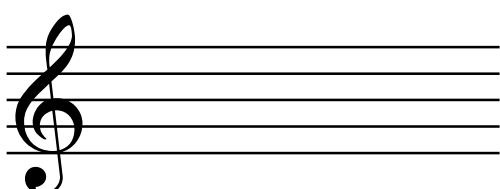
A[#]m7^{b5}



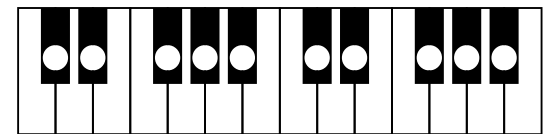
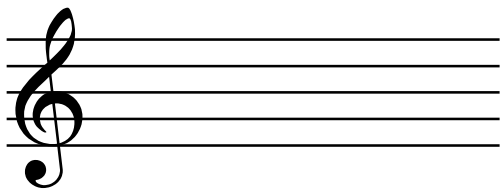
A^m7^{b5}



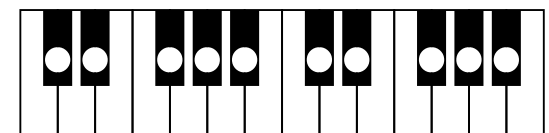
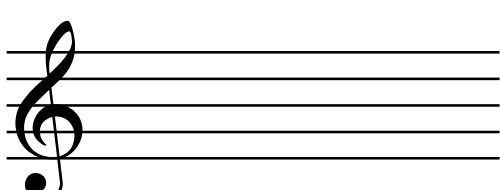
E[#]m7^{b5}



B^bm7^{b5}

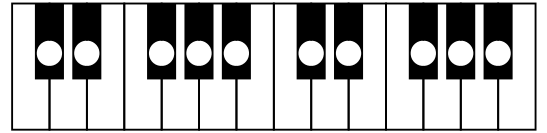


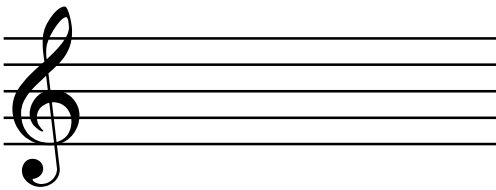
F[#]m7^{b5}

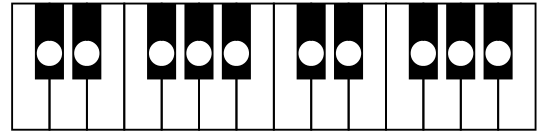


Chord Drill

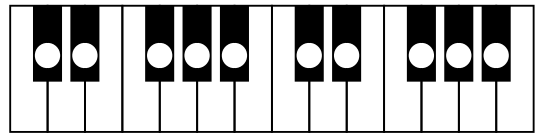
Gsus4 

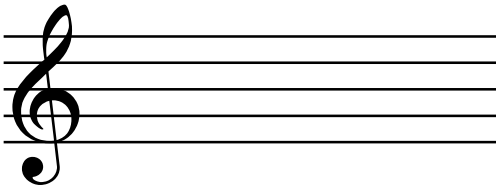


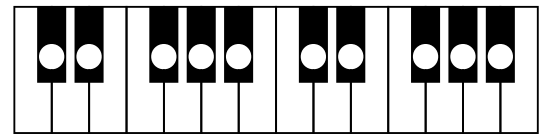
B^bsus4 



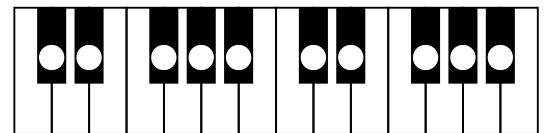
Esus4 



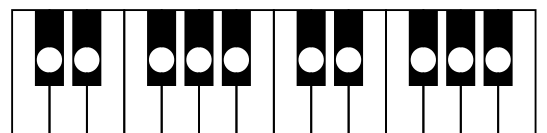
A^bsus4 



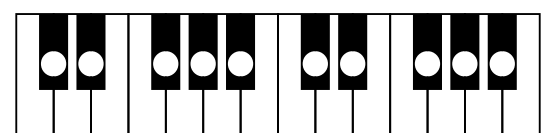
Dsus4 



Fsus4 

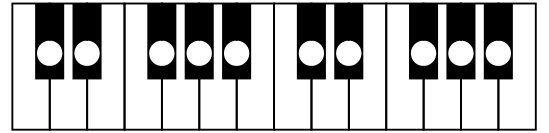


C[#]sus4 

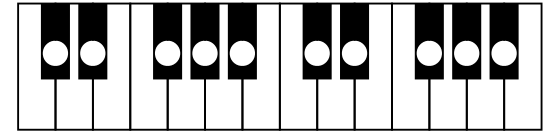


Chord Drill

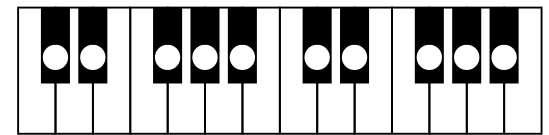
E^b7sus4 



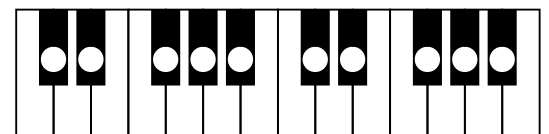
A7sus4 



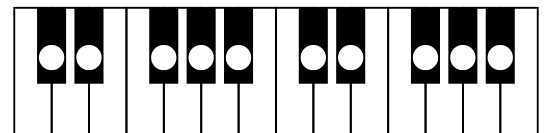
D^b7sus4 



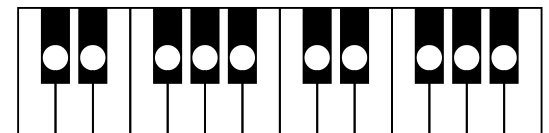
G7sus4 



E^b7sus4 



C7sus4 



F[#]7sus4 

